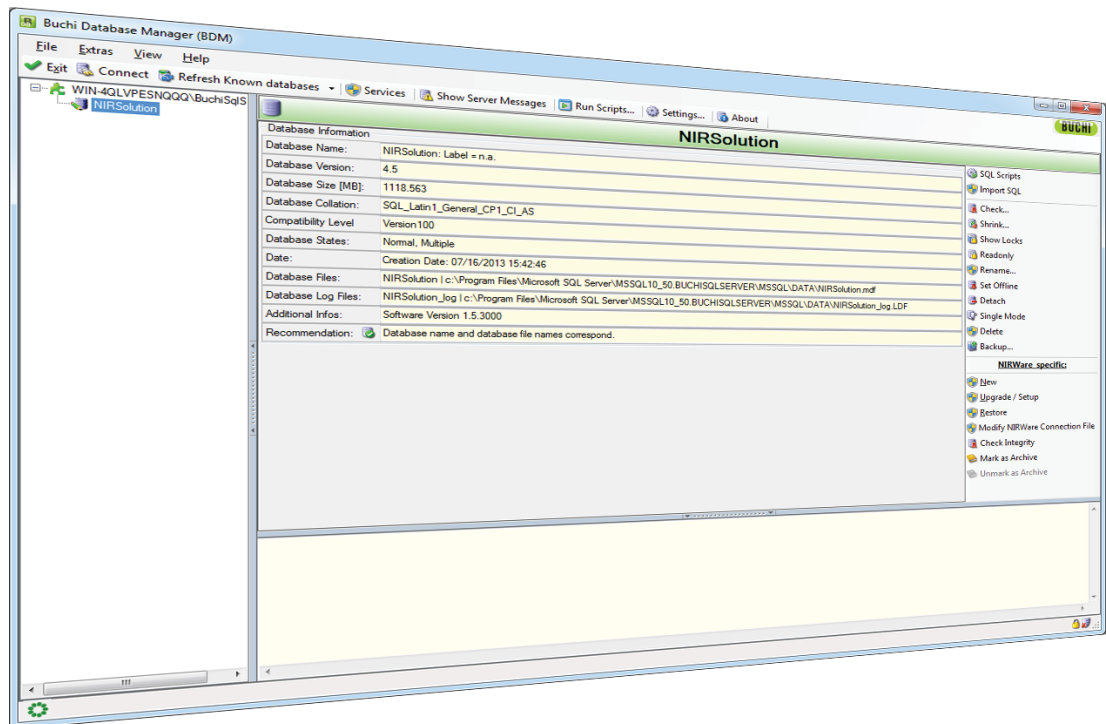




# Database Manager 1.4

## Operation Manual



## **Imprint**

Product Identification:  
Operation Manual, Database Manager 1.4  
11593644 en

Publication date:  
11.2015, Version B

BÜCHI Labortechnik AG  
Meierseggstrasse 40  
Postfach  
CH-9230 Flawil 1

E-Mail: [quality@buchi.com](mailto:quality@buchi.com)

BUCHI reserves the right to make changes to the manual as deemed necessary in the light of experience; especially in respect to structure, illustrations and technical detail.

This manual is copyright. Information from it may not be reproduced, distributed, or used for competitive purposes, nor made available to third parties. The manufacture of any component with the aid of this manual without prior written agreement is also prohibited.

# Table of contents

<b>1</b>	<b>About this manual</b> .....	<b>3</b>
1.1	Reference documents.....	3
1.2	Trademarks .....	3
1.3	Abbreviations.....	3
<b>2</b>	<b>Introduction</b> .....	<b>3</b>
<b>3</b>	<b>Overview on parts of software</b> .....	<b>4</b>
3.1	Main View.....	4
3.2	Main Toolbar (1) .....	5
3.3	Server View (3).....	5
3.4	Functions related to the SQL server (4) .....	6
3.4.1	SQL Scripts.....	6
3.4.2	Import SQL.....	6
3.4.3	Detail.....	6
3.4.4	Attach.....	6
3.4.5	Restore .....	7
3.4.6	Show Locks.....	9
3.4.7	Add new server (after changing the PC name).....	9
3.5	Database View (3) .....	10
3.6	General database related functions (4) .....	10
3.6.1	SQL Scripts.....	10
3.6.2	Import SQL.....	10
3.6.3	Check.....	10
3.6.4	Shrink.....	11
3.6.5	Show Locks.....	11
3.6.6	Read-only / Writeable.....	11
3.6.7	Rename .....	11
3.6.8	Set Offline / Online .....	12
3.6.9	Detach .....	12
3.6.10	Single / Multiple Mode .....	13
3.6.11	Delete .....	13
3.6.12	Backup.....	13
3.6.13	Restore .....	14
3.7	Logger and info panel (6).....	16
3.8	About Dialog.....	16
<b>4</b>	<b>Settings</b> .....	<b>17</b>
4.1	General Options .....	17
4.2	NIRWare Settings.....	18
<b>5</b>	<b>Plugin specific functions</b> .....	<b>18</b>
5.1	Sepacore Control.....	18
5.1.1	New empty database .....	19
5.1.2	Attach.....	19
5.1.3	Restore .....	20
5.1.4	Backup.....	20
5.1.5	Delete System Configuration.....	20
5.2	SepacoreRecord.....	20
5.2.1	New empty database .....	21
5.2.2	Upgrade .....	21
5.2.3	Attach.....	22
5.2.4	Restore .....	22
5.2.5	Backup.....	22

5.3	NIRWare.....	22
5.3.1	New empty database .....	23
5.3.2	Upgrade / Setup .....	24
5.3.3	Modify NIRWare Connection File .....	24
5.3.4	Check Integrity .....	24
5.3.5	Mark / Unmark as Archive .....	24
5.3.6	Restore .....	24
5.4	Measurement Database.....	24
5.4.1	New empty database .....	25
<b>6</b>	<b>Requirements .....</b>	<b>26</b>
<b>7</b>	<b>Troubleshooting .....</b>	<b>27</b>
7.1	Using another folder to store backups.....	27
7.2	Exception Dialog.....	31
7.3	Database restore failed – Access is denied .....	32
7.4	Database restore failed – BUCHI software access the DB.....	33
7.5	Database restore failed – BUCHI software runs on another PC .....	34
7.6	Connect to SQL Server dialog .....	35
7.7	Check DB .....	35
7.8	Show software accessing the server or DB.....	36
7.9	Start and Stop Windows Services.....	36
7.10	Server Messages Window .....	37
7.11	Unlocker Dialog .....	37
7.12	Running Scripts Dialog .....	38
<b>8</b>	<b>Some basic info about some database functions .....</b>	<b>39</b>
<b>9</b>	<b>Change History.....</b>	<b>40</b>

# 1 About this manual

This manual describes the BUCHI database manager 1.4 functions and solutions in case of errors which are related to customers operations.

The BUCHI database manager includes a lot of database maintenance functions, which are only allowed to be used for qualified MS SQL server administrators or under specific instruction of BUCHI software support.

## 1.1 Reference documents

For information on SepacoreControl, NIRWare, NIRCal, SepacoreRecord, please refer to

- SepacoreControl: Help File
- NIRWare: Help File or Operation Manual
- NIRCal: Help File or Operation Manual
- SepacoreRecord: Help File

## 1.2 Trademarks

The following product names and any registered and unregistered trademarks mentioned in this manual are used for identification purposes only and remain the exclusive property of their respective owners:

- Intel© is a registered trademark of Intel© Corporation
- Windows® is a registered trademark of Microsoft© Corporation
- SQL Server® is a registered trademark of Microsoft© Corporation


## 1.3 Abbreviations

DB	Database
MS	Microsoft
SQL	Structured Query Language
Admin mode	BDM runs as an user with Administrator rights within the operating system

# 2 Introduction

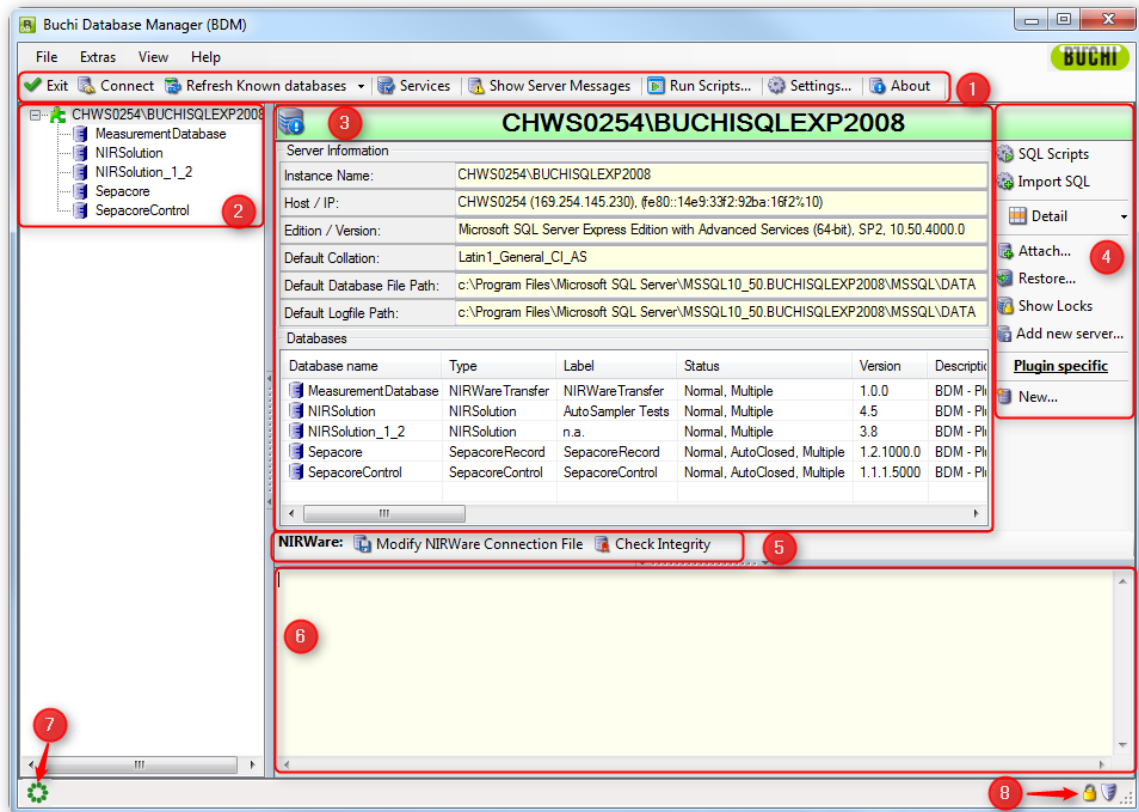
The BUCHI Database Manager (BDM) is a maintenance tool for SQL servers. It is built on Microsoft's Server management objects (SMO).




There are many general functions built in, separated in server and database functions. Additionally there are plugins for several BUCHI products using a SQL database. These plugins support specific functions and SQL scripts related to those products.

Function buttons with a Shield Icon (  Attach... ) means, this function is only available when BDM was started in Admin mode. You can still press the buttons and a Dialog box appears and asks you, if you want to start BDM in Admin mode.

## 3 Overview on parts of software

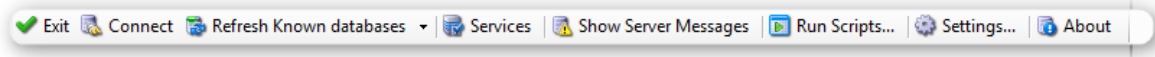
### 3.1 Main View



1	Main Toolbar (refer to chapter 0)
2	Tree panel: SQL Server and available databases
3	SQL Server and database information <ul style="list-style-type: none"> <li>– SQL Server (refer to chapter 0)</li> <li>– Database view (refer to chapter 0)</li> </ul>
4	Functions referring selected database (refer to chapter 0)
5	BUCHI software specific functions (Plugins)
6	Logger and info panel (refer to chapter 3.7)
7	Working indicator, animates when the BDM is busy
8	Locks indicator  , shows if the script running is activated The  indicator shows if the BDM is running in OS Administrator mode (Windows Vista, 7) The  shows the current connection asa tool tip.

## 3.2 Main Toolbar (1)

Most of the Toolbar items are also in the menu bar defined.



<b>Exit</b>	Exits the BDM
<b>Connect</b>	Opens the Connection Dialog to connect to another SQL server
<b>Refresh Known / All databases</b>	Refreshes the database list: Known: only known (BUCHI) databases are listed All: all databases are listed, including Offline
<b>Services</b>	Opens the services dialog (see further below)
<b>Show Server Messages</b>	Opens a window where all messages sent by the SQL server are listed. This is used only maintenance reasons
<b>Run Scripts...</b>	Opens the Script Runner Dialog (see below)
<b>Settings...</b>	Opens the Settings dialog (see below)
<b>About</b>	Opens the About Dialog with version and plugins information

## 3.3 Server View (3)

When the SQL server is selected in the tree panel the following view is active.

Under 'Server Information' are the main properties listed from SQL Server.

Below under 'Databases' are all known BUCHI DB listed.

**CHWS0254\BUCHISQLEXP2008**

**Server Information** (1)

Instance Name: CHWS0254\BUCHISQLEXP2008  
 Host / IP: CHWS0254 (169.254.145.230), (fe80::14e9:33f2:92ba:16f2%10)  
 Edition / Version: Microsoft SQL Server Express Edition with Advanced Services (64-bit), SP2, 10.50.4000.0  
 Default Collation: Latin1\_General\_CI\_AS  
 Default Database File Path: c:\Program Files\Microsoft SQL Server\MSSQL10\_50.BUCHISQLEXP2008\MSSQL\DATA  
 Default Log file Path: c:\Program Files\Microsoft SQL Server\MSSQL10\_50.BUCHISQLEXP2008\MSSQL\DATA

**Databases** (2)

Database name	Type	Label	Status	Version	Description
MeasurementDatabase	NIRWareTransfer	NIRWareTransfer	Normal, Multiple	1.0.0	BDM - Pl
NIRSolution	NIRSolution	AutoSampler Tests	Normal, Multiple	4.5	BDM - Pl
NIRSolution_1_2	NIRSolution	n.a.	Normal, Multiple	3.8	BDM - Pl
Sepacore	SepacoreRecord	SepacoreRecord	Normal, AutoClosed, Multiple	1.2.1000.0	BDM - Pl
SepacoreControl	SepacoreControl	SepacoreControl	Normal, AutoClosed, Multiple	1.1.1.5000	BDM - Pl

**NIRWare:** (3) Modify NIRWare Connection File Check Integrity

**Right-hand menu** (4): SQL Scripts, Import SQL, Detail, Attach..., Restore..., Show Locks, Add new server..., Plugin specific, New...

1	Some important information about the connected server is displayed
2	the known or all databases found on the server are listed
3	Plugin specific functions which don't belong to a specific database
4	Server functions: (see below)

## 3.4 Functions related to the SQL server (4)

### 3.4.1 SQL Scripts

Opens the SQLScriptRunner Dialog and shows server related scripts to execute.

### 3.4.2 Import SQL

Imports server related SQL scripts provided by the customer support. Please follow the instruction given by support.

### 3.4.3 Detail

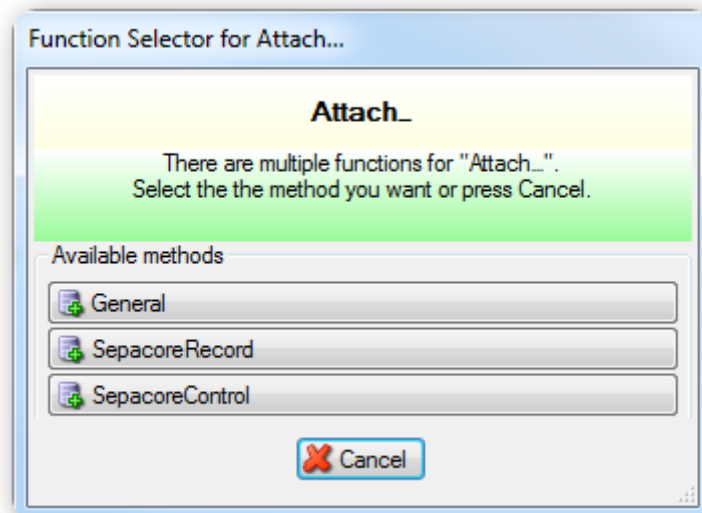
Switches the databases view between:

- Detail
- Grouped with type
- Grouped with status

### 3.4.4 Attach

This function attaches a database to the server by providing the MDF and LDF file.

Because there are plugin specific Attach procedures, a dialog appears where you have to select the required Attach item. **It is recommended always to use the plugin specific functions!**



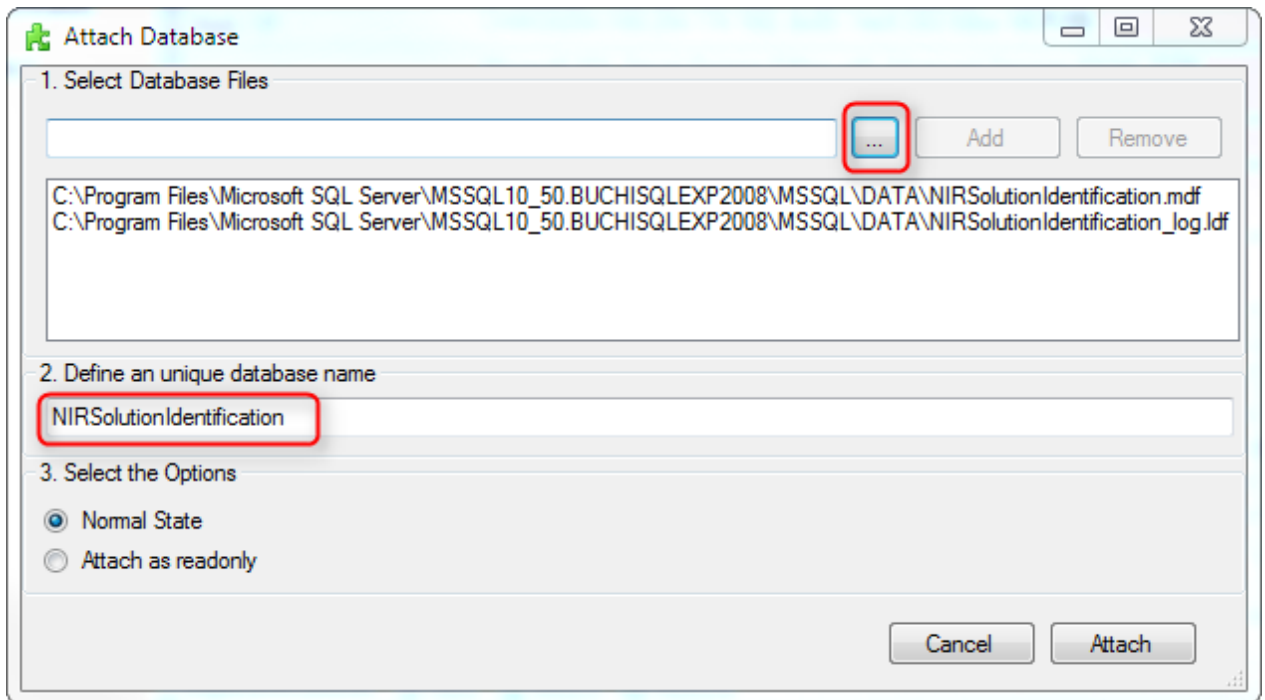
In the following Attach Dialog first select an MDF file. If there is a corresponding LDF file it is automatically added to the list.

Then enter a database name which must be unique within the SQL server!

Please consider that when attaching it with the option Read-only, the application has no write access to it.

If the SQL server is a remote server, the files listed to select are files on the remote server.

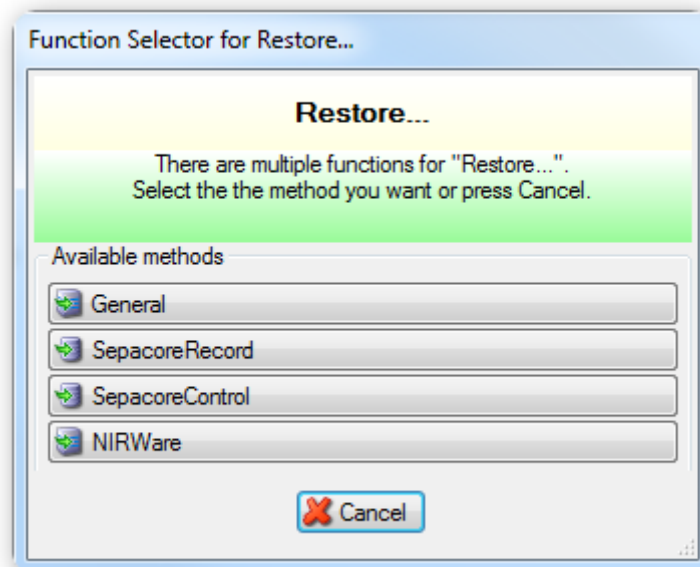




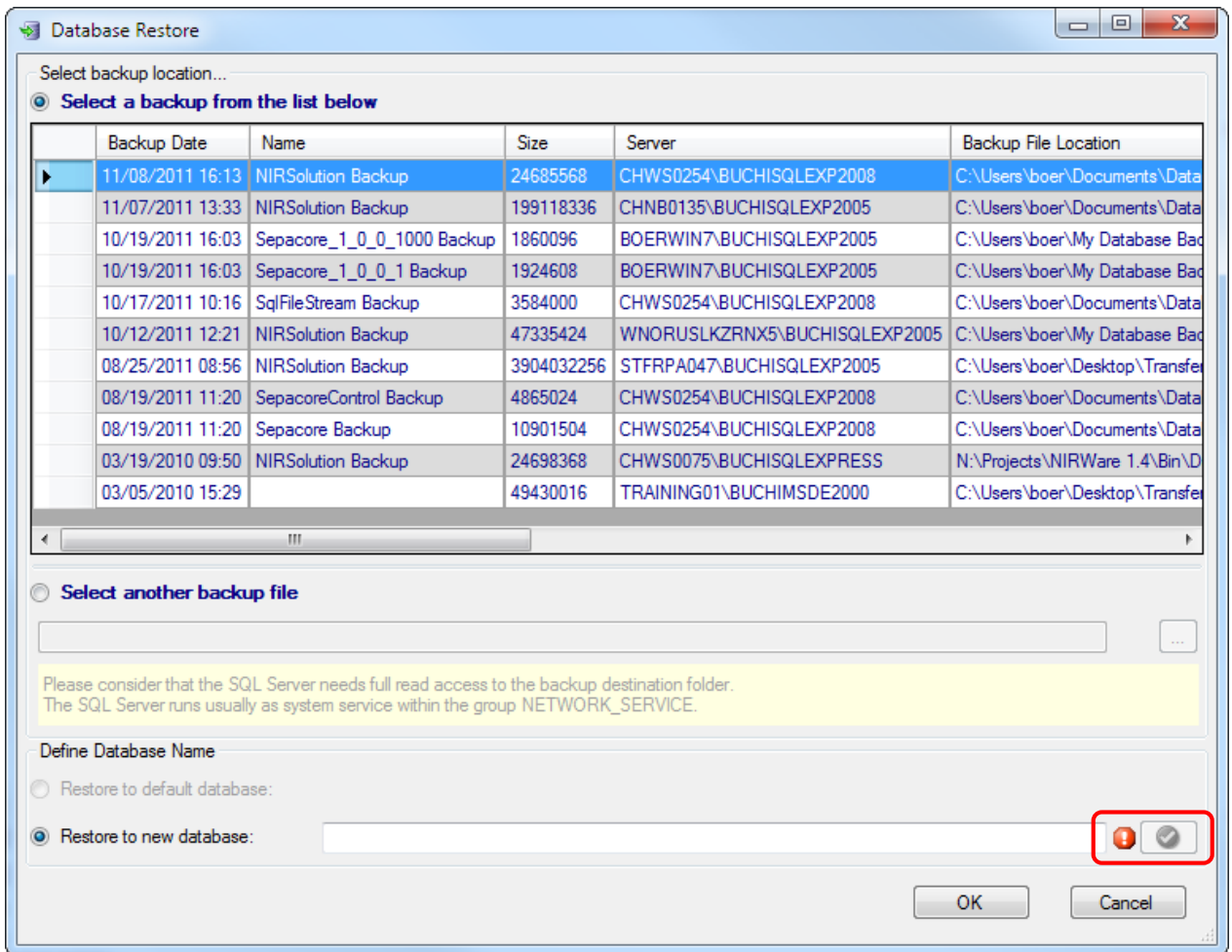
### 3.4.5 Restore



This function restores a previously done backup.

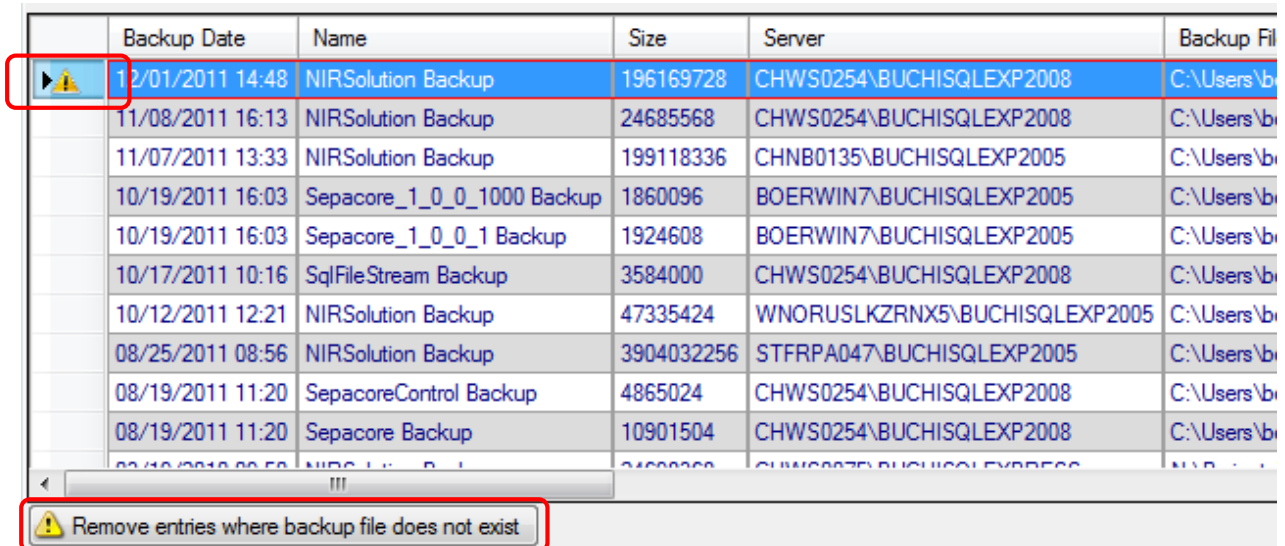
Because there are plugin specific Restore procedures, a dialog appears where you have to select the required Restore item. **It is recommended always to use the plugin specific functions!** See at the Database View for a deeper explanation.



1. Close all open BUCHI software
2. Select in the left tree panel the DB for restore
3. Select a backup from the list  
or select a backup file
4. If you call restore from the server view, you have to enter an unique database name  
If you call restore from the database view you may choose the default database or enter a new unique database name
5. Click on 'OK'



-  means that the database name is missing or not unique
-  check the entered name



There might be an warning mark on a backup row, which means that the correspondig file is missing. With the button below those entries are removed.

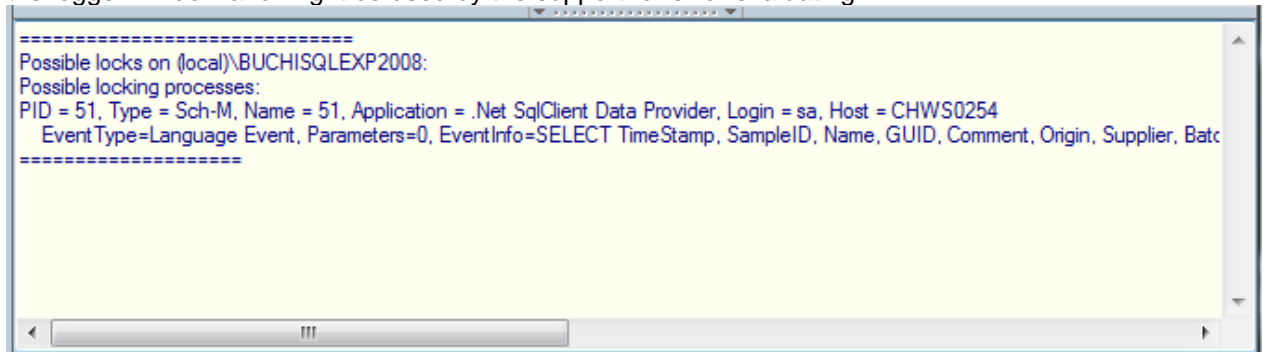
When selecting another backup file there are 2 possibilites depending if the SQL server is local or remote:

Server is local	A file selection box is displayed where you can select a backup file
-----------------	--

Server is remote	A special file selection dialog is displayed where you can select backup files store on the host where the remote SQL server is located.
------------------	--

### 3.4.6 Show Locks

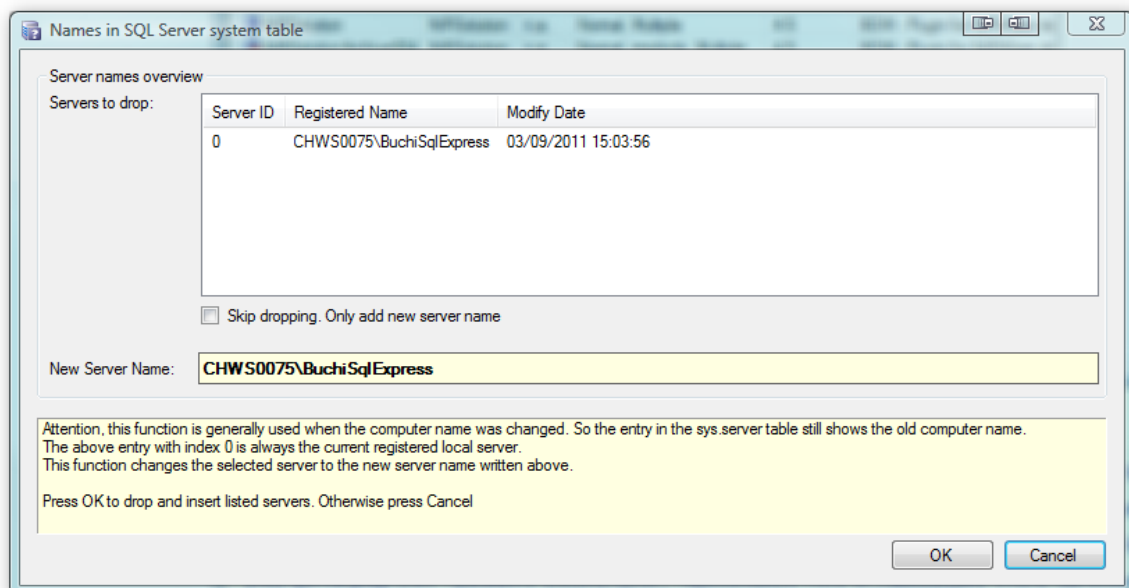
This function shows all possible locks or open connection to the SQL server. The info is shown in the logger window and might be used by the support for error evaluating.



### 3.4.7 Add new server (after changing the PC name)

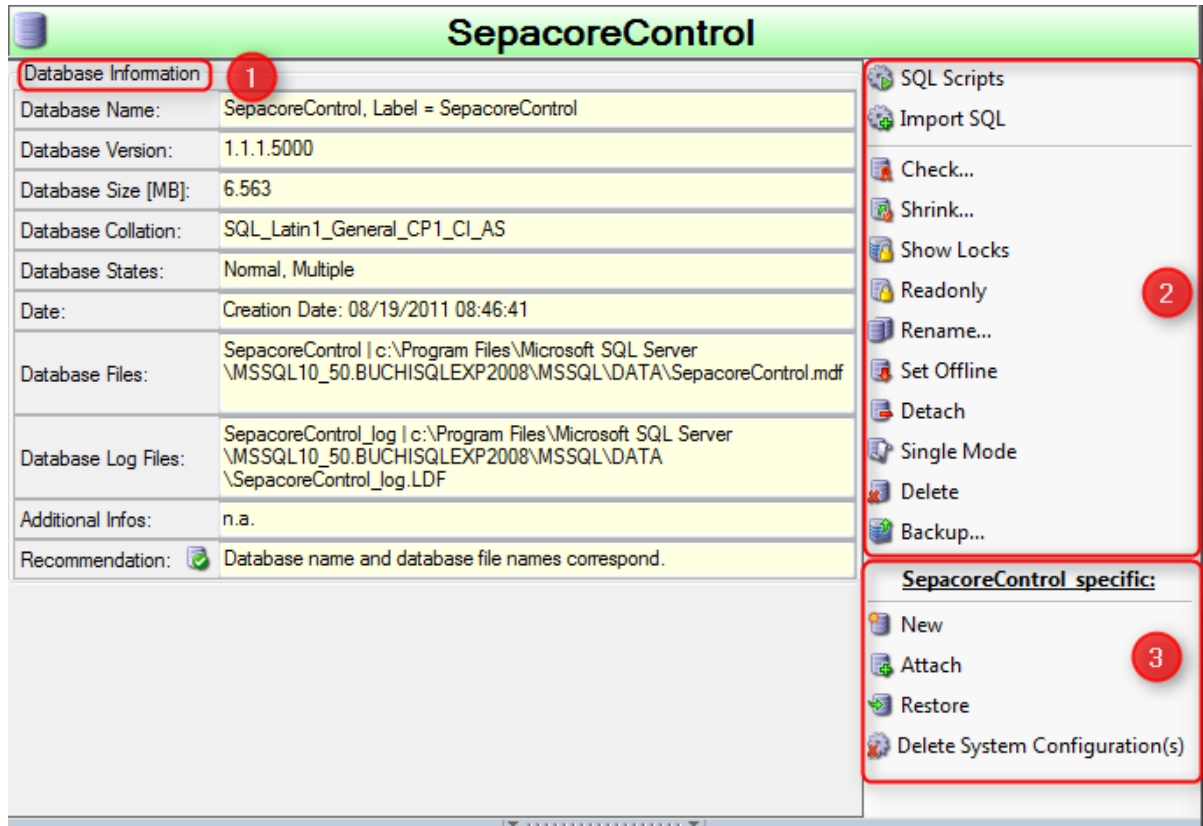
Please proceed as follow after a change of the PC name.

1. Select the SQL server name (e.g. PC name\BuchiSqlExpress) in the tree panel
2. Click on 'Add new server...' in the right panel
3. Click on 'OK'



## 3.5 Database View (3)

Under Database Information are the main properties of the currently selected DB displayed. On the right side panel, all database related functions are listed (see below).



1	Information about the selected database
2	General database functions
3	Plugin specific database functions

## 3.6 General database related functions (4)

### 3.6.1 SQL Scripts

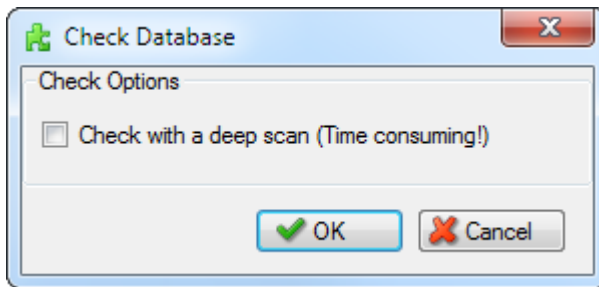
Opens the SQLScriptRunner Dialog and shows the database related scripts to execute.

### 3.6.2 Import SQL

Imports database related SQL scripts provided by the customer support. Please follow the instruction given by support.

### 3.6.3 Check

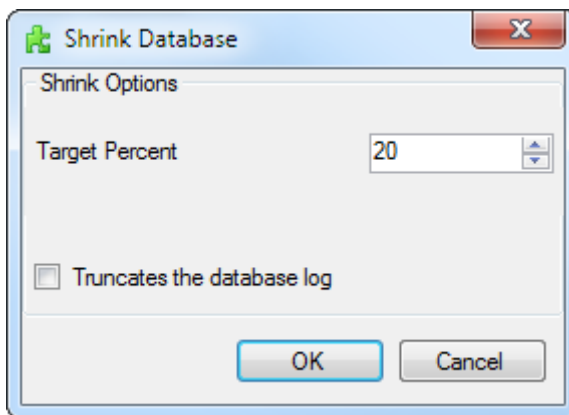
This function checks the consistency of the database. The result is written to the logger window.



If checking with deep scan please consider that it might run for a longer time. The results of the Check are written to the Logger window.

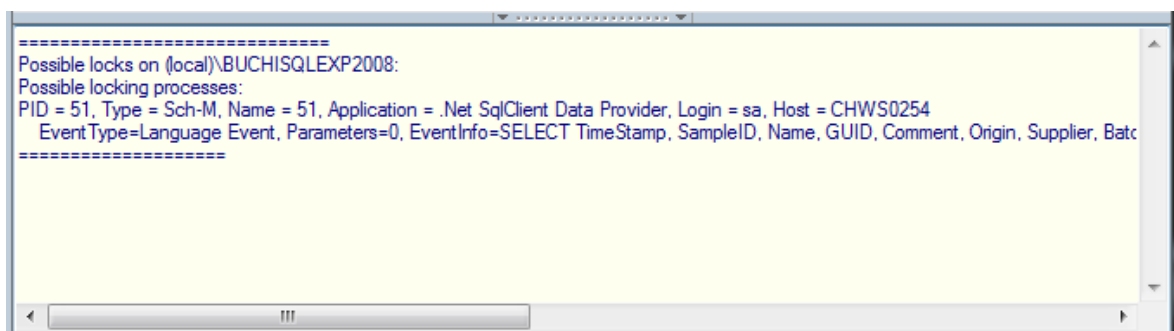
### 3.6.4 Shrink

This function is similar to defrag function of windows. It eliminates the gaps and truncates the empty space at the end. So it is possible to shrink the database size. It is recommended to use the default setting at the following dialog. If the Truncate is checked then all data in the Log file (LDF) is first copied to the main data file (MDF). To leave the default amount of "Target Percent" gives a better performance for further database transactions.



### 3.6.5 Show Locks

This function shows all possible locks or open connection to the SQL server. The info is shown in the logger window and might be used by the support for error evaluating.



### 3.6.6 Read-only / Writeable

With this function it is possible to set the database in Read-only or Writeable state. Please consider that a read-only database is inaccessible by the underlying application!

### 3.6.7 Rename

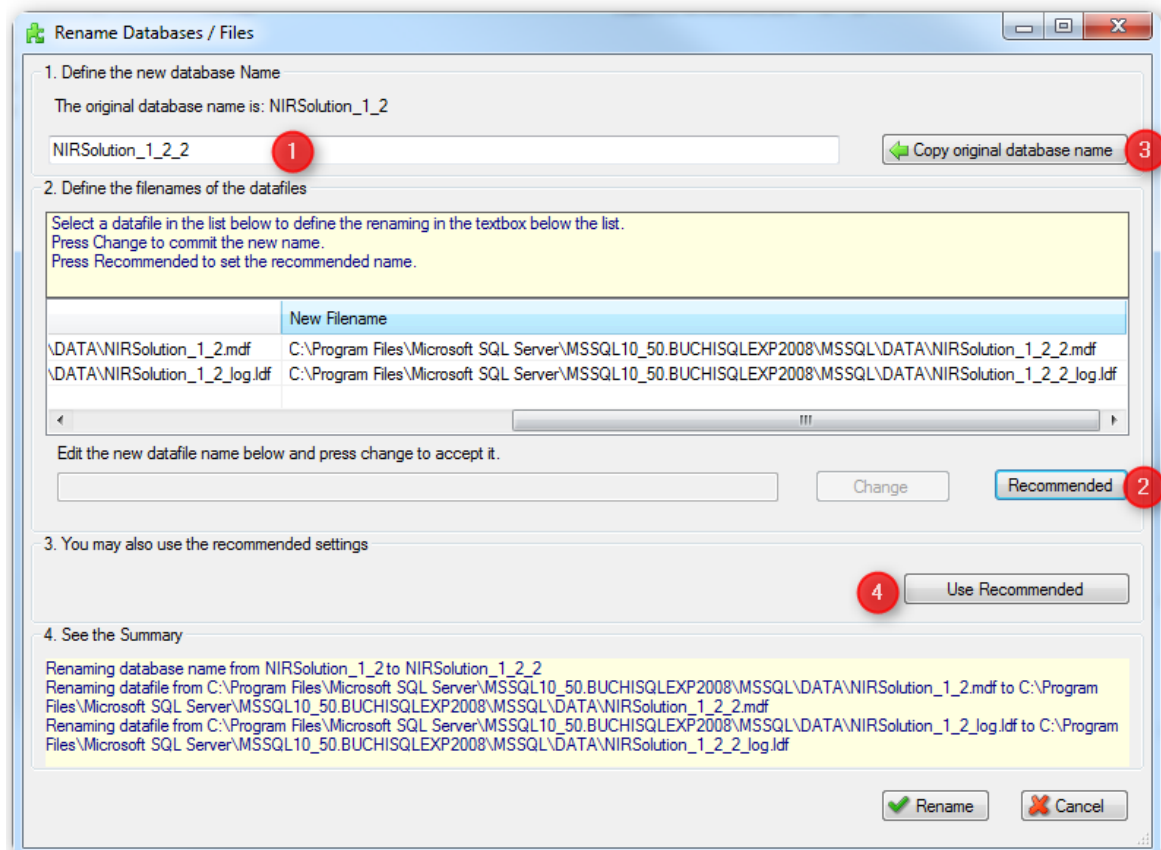
A database has a name which is listed in tree on the left side of the BDM. This name must be unique within the SQL server. The database's data is stored in files, in a MDF file and in a LDF file. This data files also has logical names. Usually all these names correspond as shown below:

Database name		<i>{theName}</i>
Data files	Logical name	Filename
MDF file	<i>{theName}</i>	<i>Path/{theName}.mdf</i>
LDF file	<i>{theName}_log</i>	<i>Path/{theName}_log.ldf</i>

In several circumstances it can happen that these names do not correspond any longer (for example when creating a NIRSolution archive on a remote server). This will be signaled by BDM:

Renaming is recommended!	On the server view
Recommendation:  Renaming is recommended!	On the database view
Renaming is recommended but not available!	On the server view if it is a remote server

With the Rename function it is possible to change the database name and on local servers also the data files name:



If a database has a recommendation to rename it, the above dialog is already filled with the needed entries. You only have to press the Rename button. This is also done by pressing the button “Use Recommended” (4).

If you want to rename the database name, enter the new name into the first field (1). With the “Copy original database name” (3), the current database name is entered into (1). Then press “Recommended” (2) to setup the renaming of the data files. Then press Rename.

### 3.6.8 Set Offline / Online

With this function you can set a database to Offline or back to Online.

Please consider that an Offline database is not recognized as a **known** database. So to make it listed, choose “Refresh” all databases in the main toolbar.

### 3.6.9 Detach

Detaching a database does the following:

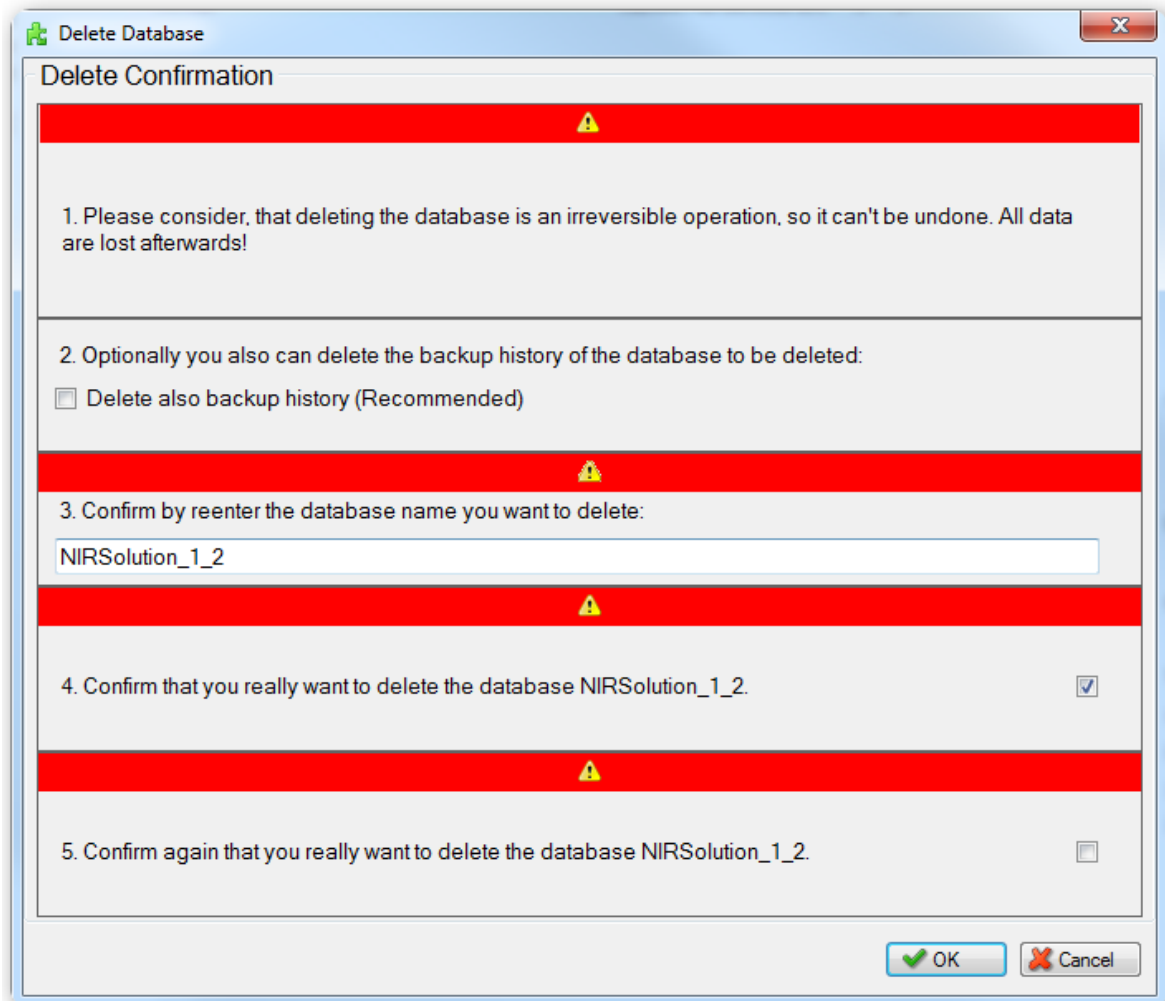
Disconnect all data files (MDF, LDF) from the SQL server, but leaves the data files in the folder.

### 3.6.10 Single / Multiple Mode

Setting the database into Single mode means the same as setting it to exclusive access. Only one connection at the same time is allowed. This inhibits other users to access and probably modify it.

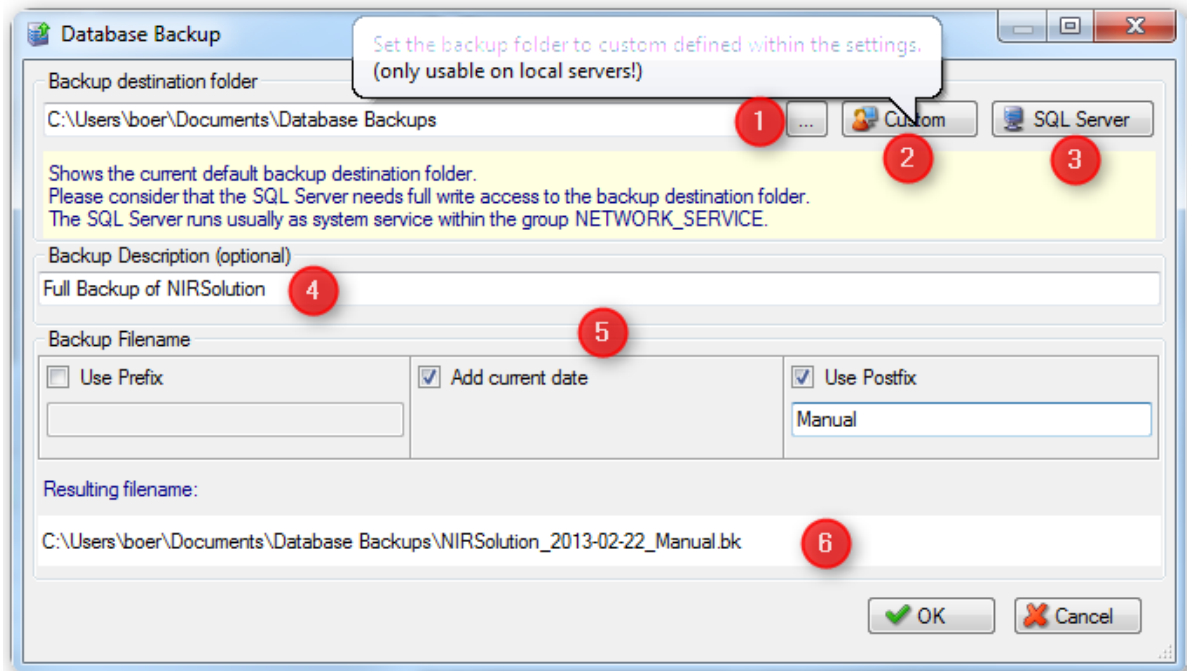
### 3.6.11 Delete

In contrast to Detach, the Delete function also disconnects all data file from the SQL server and additionally DELETES also the data files. So please handle with care and do a backup first! Because of that an extended confirmation dialog is displayed where you have to confirm the deletion multiple times.



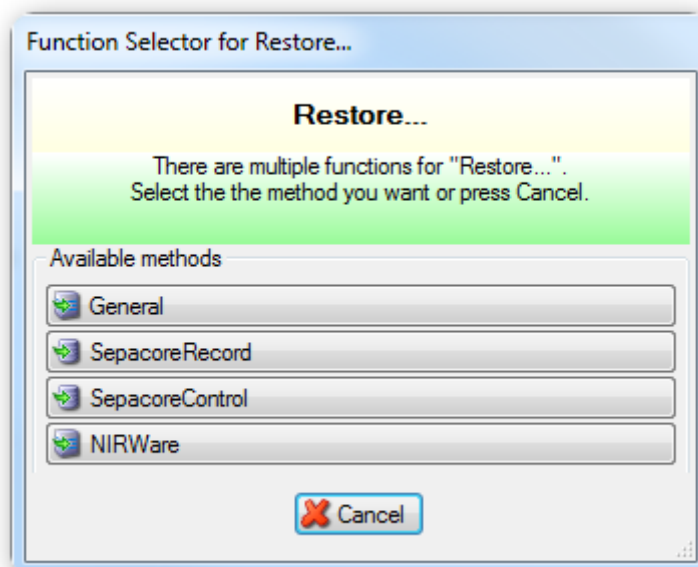
### 3.6.12 Backup

1. Select in the left tree panel the DB for backup
2. Press Backup...
3. Check that the backup destination is defined as you want. (1)  
"Custom" (2) is recommended, which is defined in the settings and is by default  
"%PublicDocuments%\Buchi\BuchiSQLServer\Backup".  
"SQL Server" (3) chooses the Backup path defined by the SQL Server
4. Optionally you may enter a description. (4)
5. Customize the filename when it is needed. (5)
6. Inspect the resulting Backup file name. (6)
7. Click on 'OK'



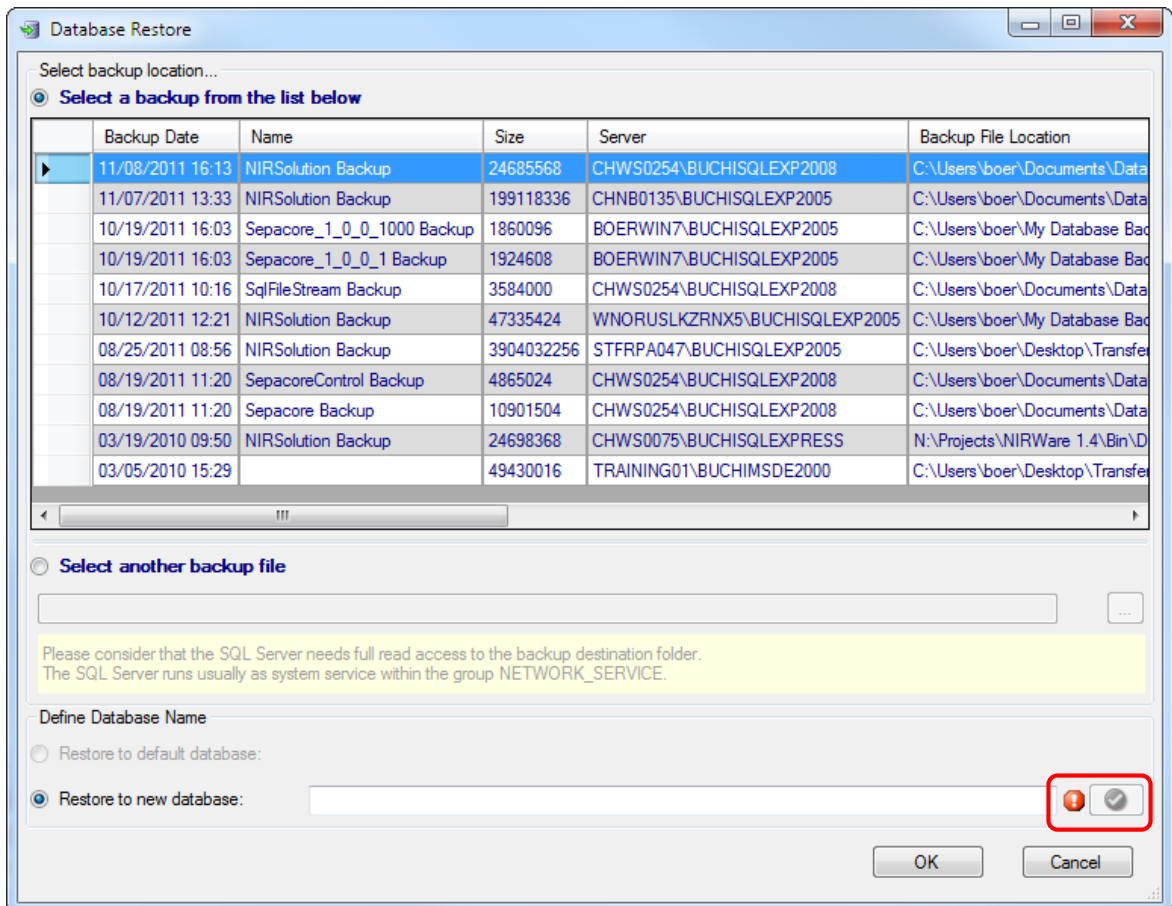
### 3.6.13 Restore

This function allows restoring a previously done backup.  
A function selector dialog appears when clicking this function in the server view.



1. Close all open BUCHI software
2. Select in the left tree panel the DB for restore
3. Select a backup from the list  
Or select a backup file
4. If you call restore from the server view, you have to enter an unique database name  
If you call restore from the database view you may choose the default database or enter a new unique database name
5. Click on 'OK'

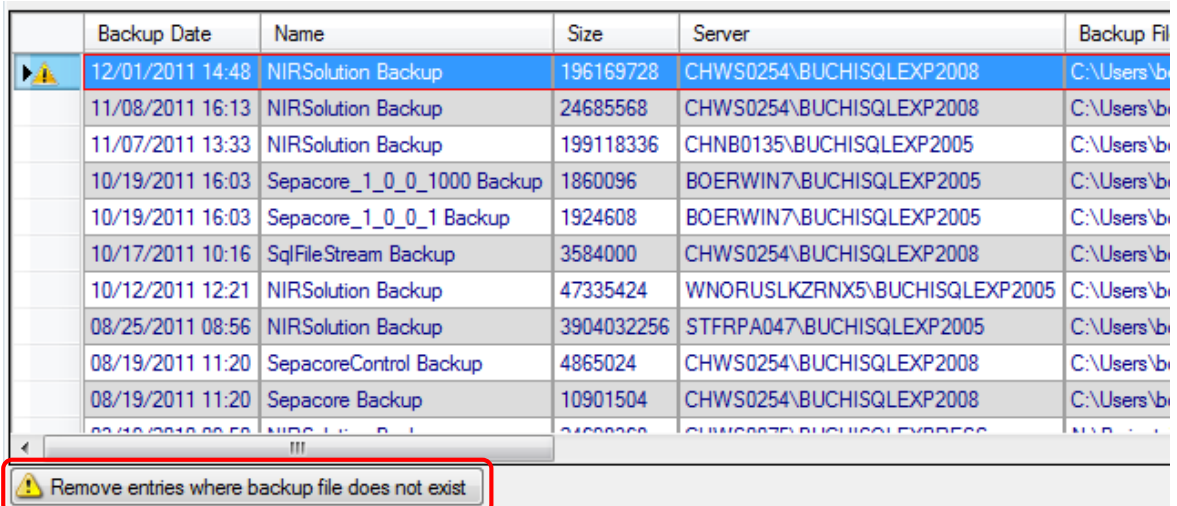




means that the database name is missing or not unique



check the entered name

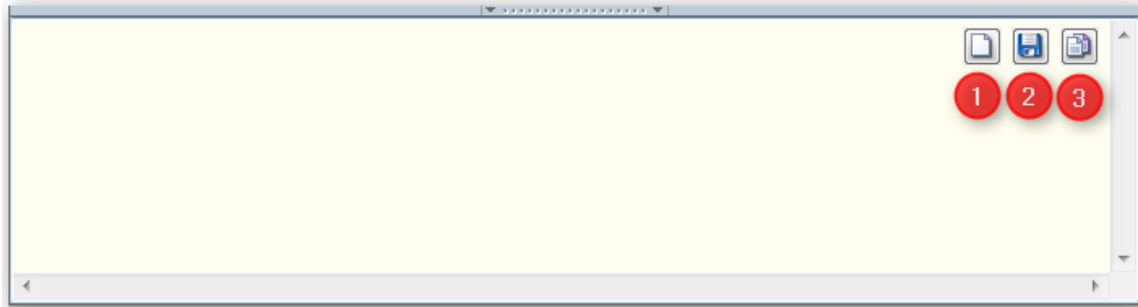


There might be an exclamation mark on a backup row, which means that the corresponding file is missing. With the button below such entries are removed.

When selecting another backup file there are 2 possibilities depending if the SQL server is local or remote:

Server is local	A file selection box is displayed where you can select a backup file
Server is remote	A special file selection dialog is displayed where you can select backup files store on the host where the remote SQL server is located.

### 3.7 Logger and info panel (6)

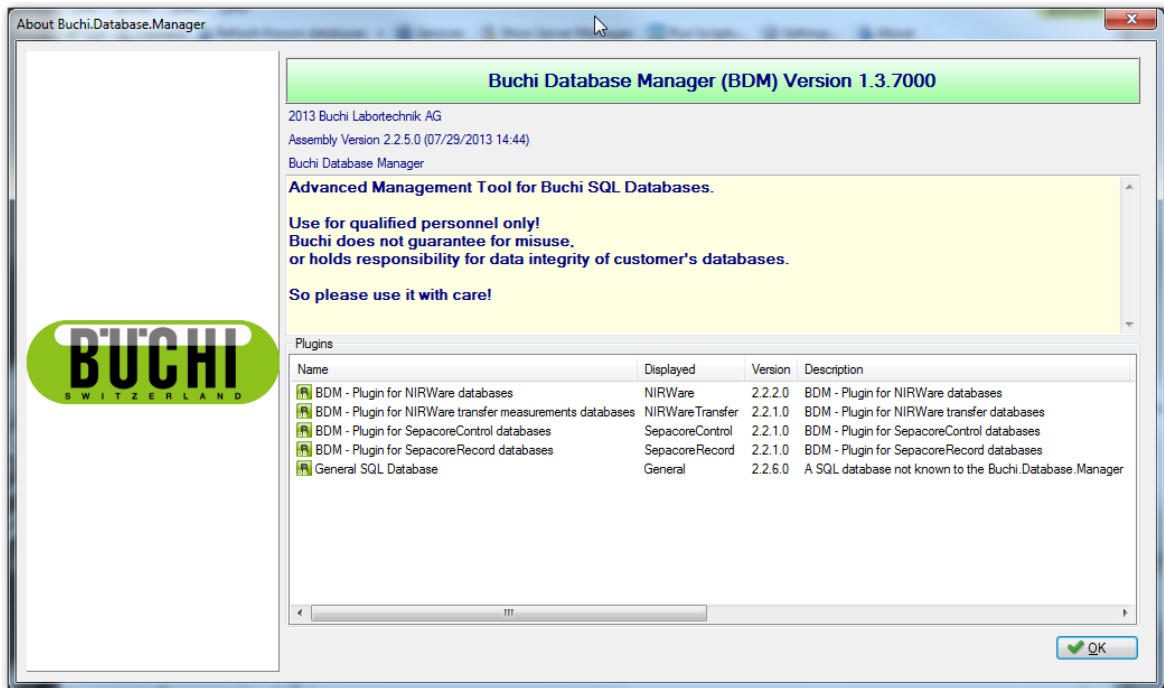


1	Clears the log
2	Saves the contents of the logger into a text file
3	Copies the content of the logger to clipboard

### 3.8 About dialog

The green bar shows the current software version.

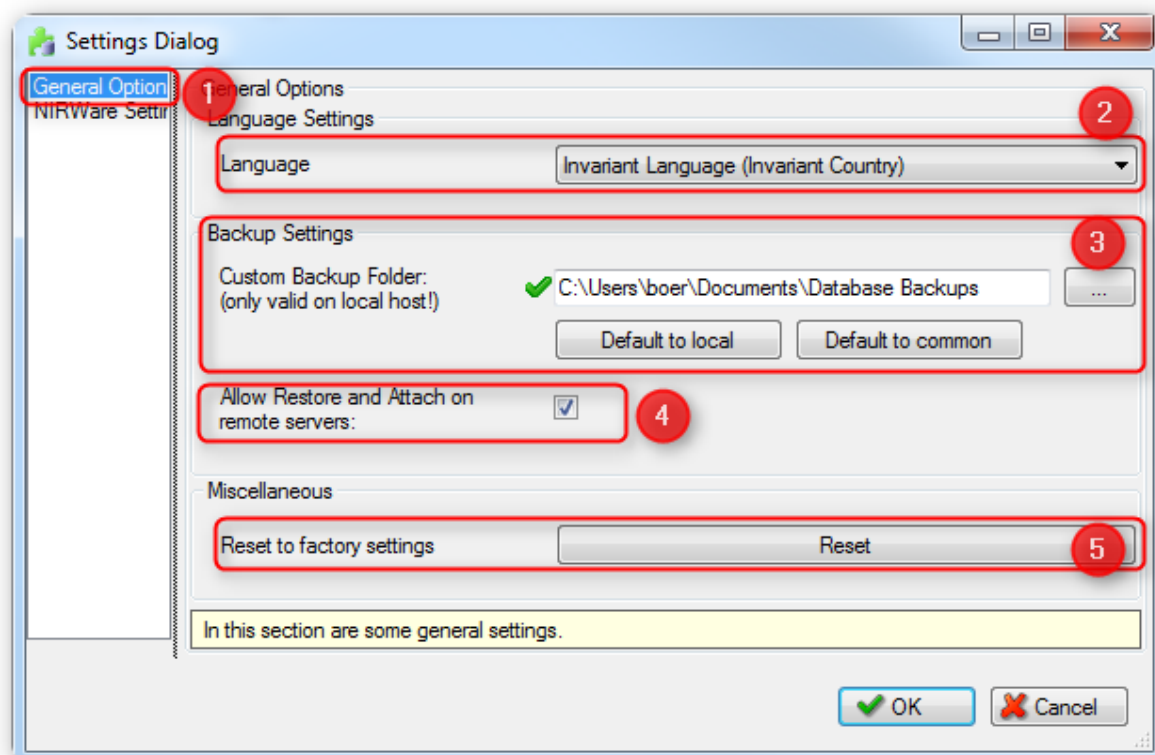
Within the Plugins group box, there are all loaded plugins listed.



## 4 Settings

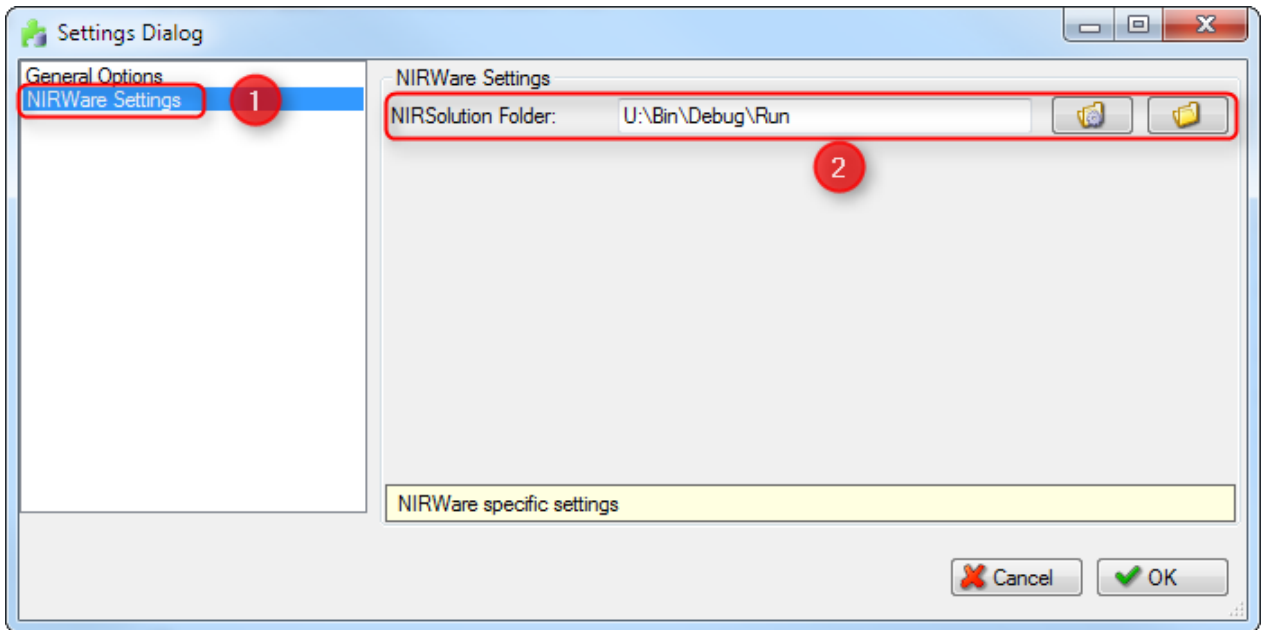
With the settings dialog one can define some general settings. It is separated into general options and plugin specific settings.



### 4.1 General Options



1	You reach the general option by selecting it on the left side.
2	Select here the language of the GUI. There are no other languages available at the time than English.
3	This is the Custom Backup Folder. This folder is created by BDM and also the needed access rights are checked and set. So the user and the SQL server have access to it. The folder might be on the users local documents or the PC's common documents.
4	If checked, then attach and restore on remote SQL servers are allowed
5	All settings, also the plugin settings are reset to their initial factory state.

## 4.2 NIRWare Settings



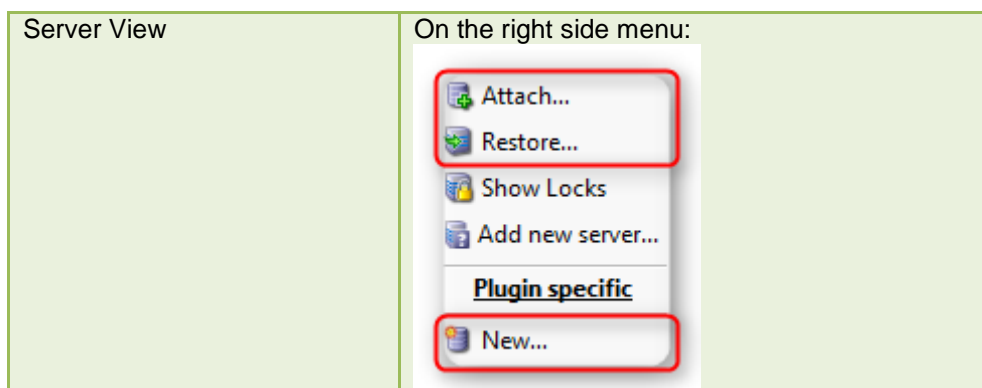
- 1 You reach the NIRWare settings by selecting it on the left side.
- 2 The NIRSolution Folder is examined by BDM automatically, if NIRWare is installed.
  -  lets BDM examine the folder
  -  you can select the folder yourself

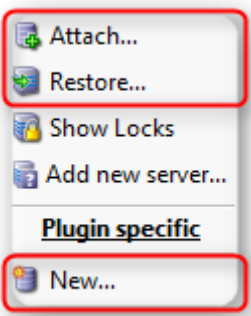
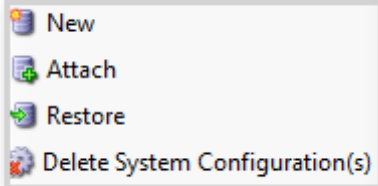
## 5 Plugin specific functions

### 5.1 Sepacore Control

Please consider that creating and upgrading a SepacoreControl database is only available when a SepacoreControl version 1.2 is installed!  
Also Attach and Restore will be done as General database (no further post processing)


You will find the specific functions in:



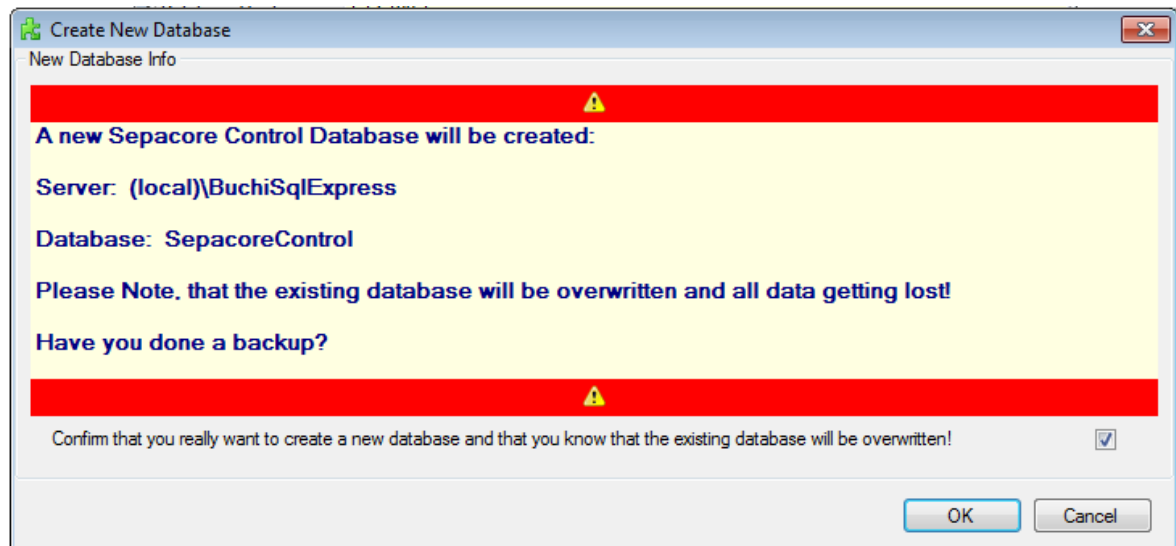
Server View	<p>On the right side menu:</p> 
Database View (of a SepacoreControl DB)	<p>On the right hand side:</p> 

### 5.1.1 New empty database

Close SepacoreControl Software before you want to create a new database!

Press the New button  **New** in the server below at the SepacoreControl functions or in the database view of a SepacoreControl database on the right hand site toolbar.

You will get a warning which reminds you that a new empty Sepacore Control Database will be created and will overwrite the old existing database, all data getting lost.  
Attention: For sure make at first a backup.




You must confirm this by clicking the check box and then click on OK.

### 5.1.2 Attach

It's same function as described in **3.4.4 Attach**, except that after attaching the correct user mappings are set.

### 5.1.3 Restore

Close SepacoreControl Software before you want to create a new database!

Press the New button  Restore in the server below at the SepacoreControl functions or in the database view of a SepacoreControl database on the right hand site toolbar.

See in **3.6.13 Restore**.


This specific functions executes the general restore function and does some specific settings afterward so setup the database usable.

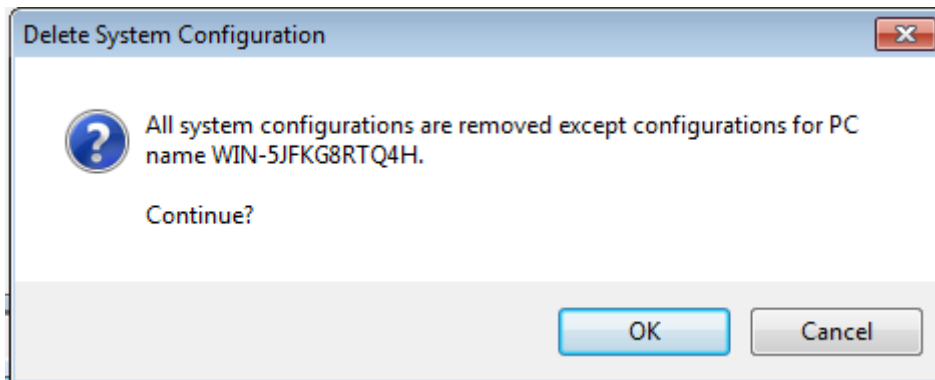
### 5.1.4 Backup

See in **3.6.12 Backup**.

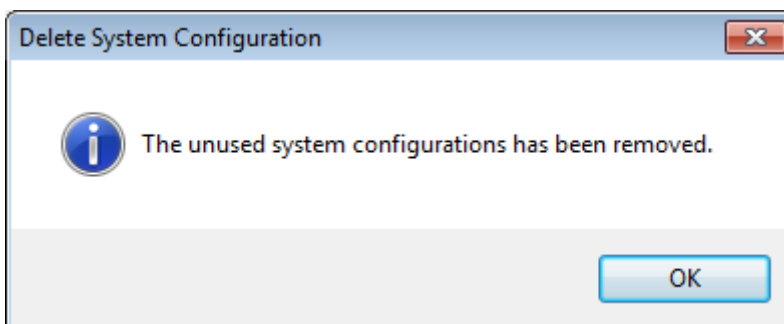
### 5.1.5 Delete System Configuration

Close Sepacore Control Software first!

After clicking on the  Delete System Configuration(s) button, following Dialog boxes appears:



You will be informed that the unused system configurations have been removed.

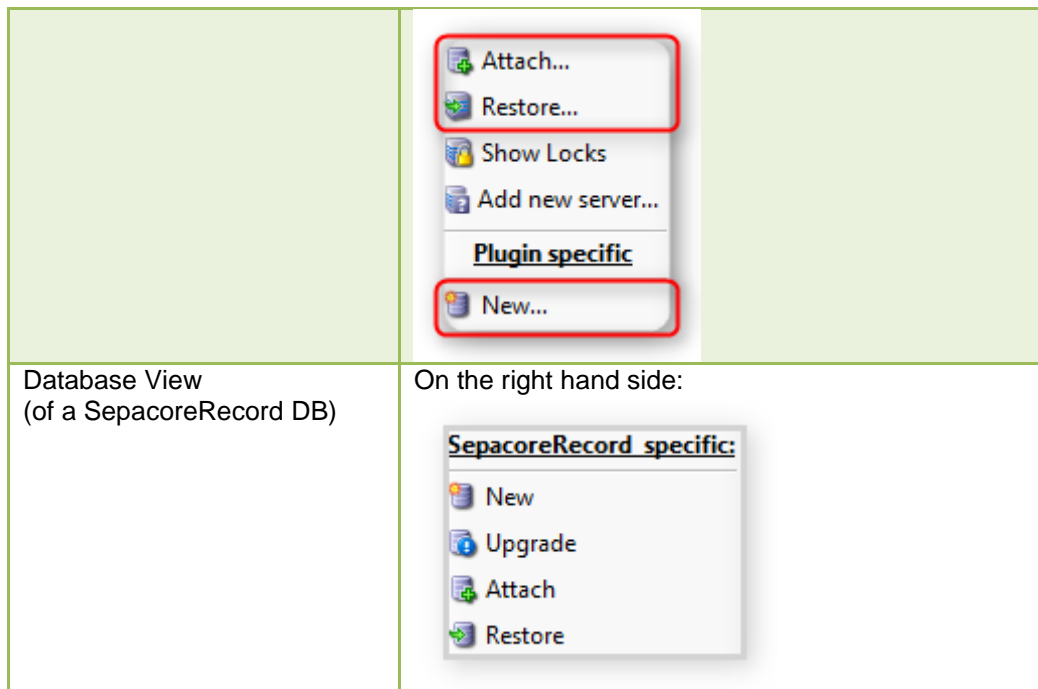


## 5.2 SepacoreRecord

Please consider that creating and upgrading a Sepacore Record database is only available when a Sepacore Record version 1.2 is installed!  
Also Attach and Restore will be done as General database (no further post processing)


You will find the specific functions in:

Server View	On the right side menu:
-------------	-------------------------

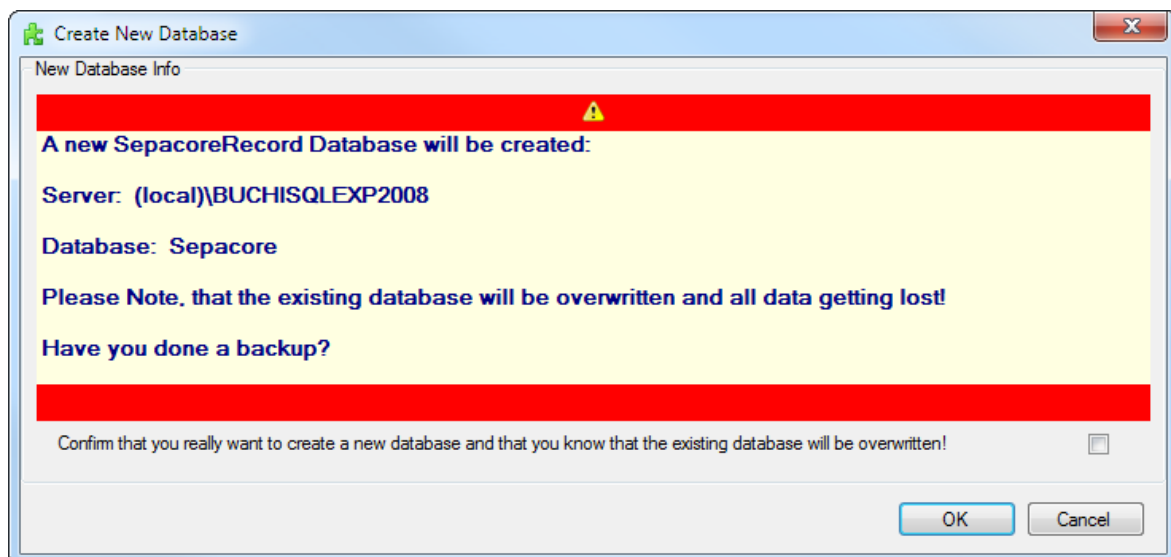


### 5.2.1 New empty database

Close SepacoreControl Software before you want to create a new database!


Press the New button  **New** in the server below at the SepacoreControl functions or in the database view of a SepacoreControl database on the right hand site toolbar.

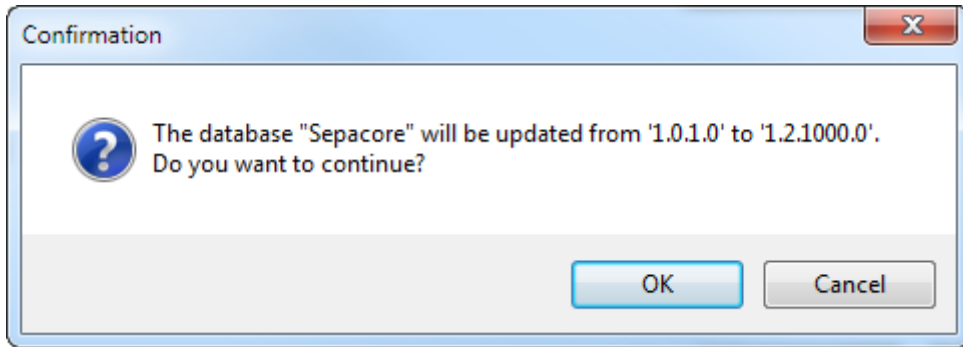
You will get a warning which reminds you that a new empty Sepacore Control Database will be created and will overwrite the old existing database, all data getting lost.  
Attention: For sure make at first a backup.



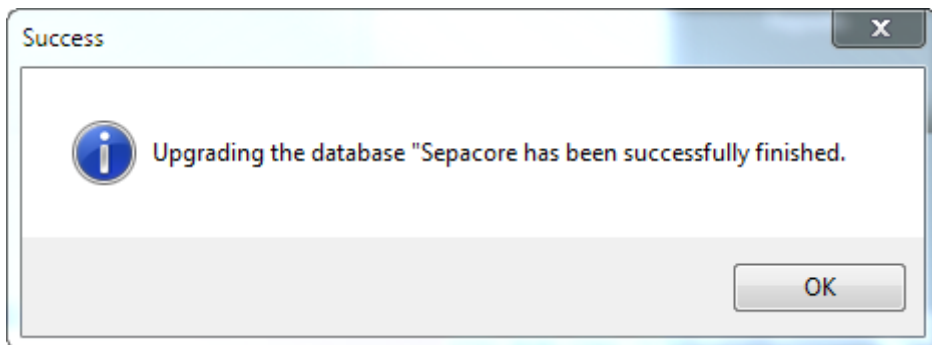
You must confirm this by clicking the check box and then click on OK.

### 5.2.2 Upgrade

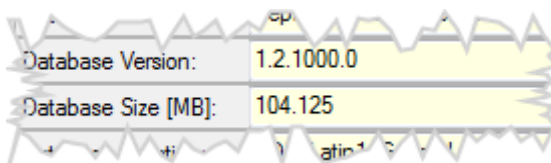
If the SepacoreRecord database's version already is the latest, then this function is disabled. So it is only possible to upgrade the database to the latest version. After pressing the Upgrade button  **Upgrade**, the following Info appears where you still can abort the upgrade with Cancel.



And after successfully upgrading the Success Message appears.



You can check the current database version always in the Database Information panel.




### 5.2.3 Attach

It's same function as described in **3.4.4 Attach**, except that after attaching the correct user mappings are set.

### 5.2.4 Restore

Close SepacoreControl Software before you want to create a new database!

Press the New button  **Restore** in the server below at the SepacoreControl functions or in the database view of a SepacoreControl database on the right hand site toolbar.

See in **3.6.13 Restore**.

This specific functions executes the general restore function and does some specific settings afterward so setup the database usable.

### 5.2.5 Backup

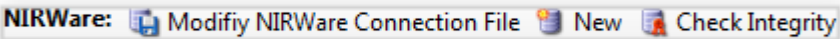
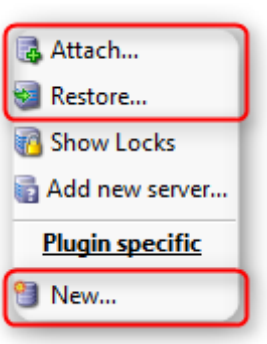
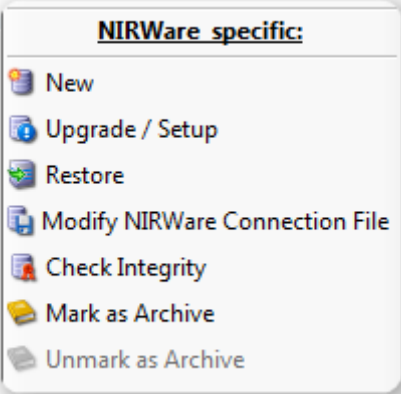
See in **3.6.12 Backup**.

## 5.3 NIRWare

Most of the NIRSolution specific functions are only available when NIRWare is installed!

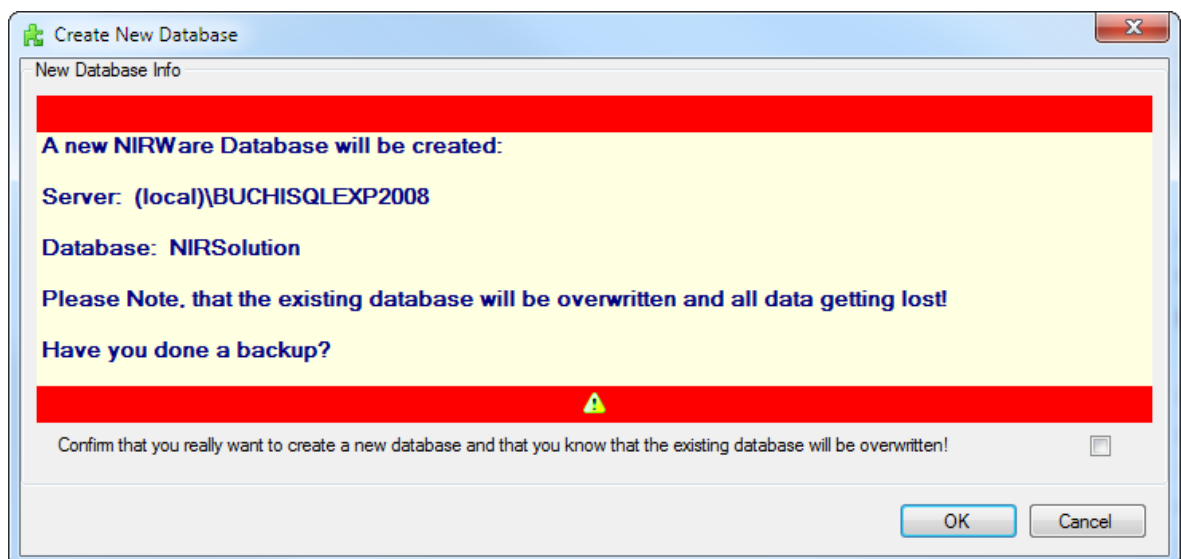
You will find the specific functions in:



Server View	<p>Below the database list:</p>  <p>On the right side menu:</p> 
Database View (of a NIRSolution DB)	<p>On the right hand side:</p> 

### 5.3.1 New empty database

This function creates a new NIRSolution database with the fixed name as it is defined within the connection file (usually NIRSolution). If there is already such a database a warning message appears.



### 5.3.2 Upgrade / Setup

Starts the Shell tool with the option `-e setup` with current database and upgrades the database if needed.

### 5.3.3 Modify NIRWare Connection File

On behalf of the Connection dialog the NIRWare connection file is edited and stored.

### 5.3.4 Check Integrity

With this function the integrity of the NIRSolution database is checked. In fact there are following checks:

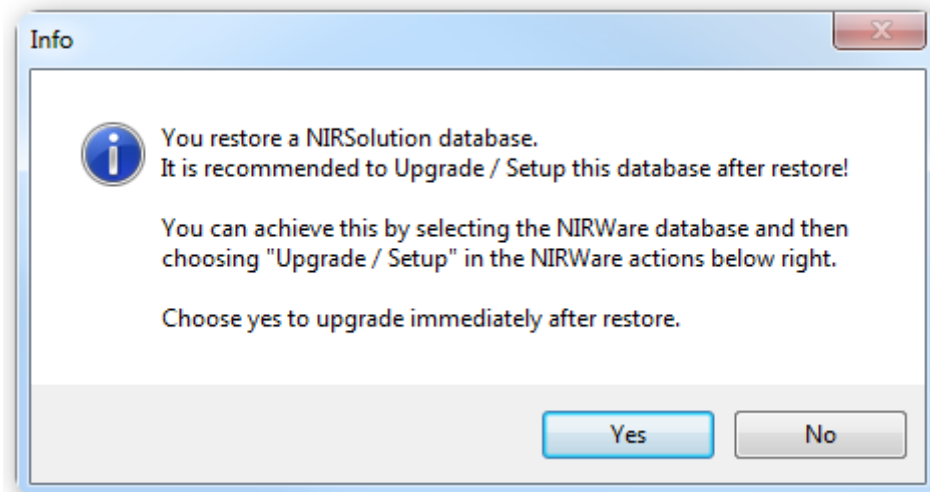
- Connection file exists
- Online
- Writeable
- Version is up to date
- Multiple user access

### 5.3.5 Mark / Unmark as Archive

If a database is marked as Archive then it is Read only has a special entry to mark it as Archive. With this function it is possible to set or unset this behavior.

### 5.3.6 Restore

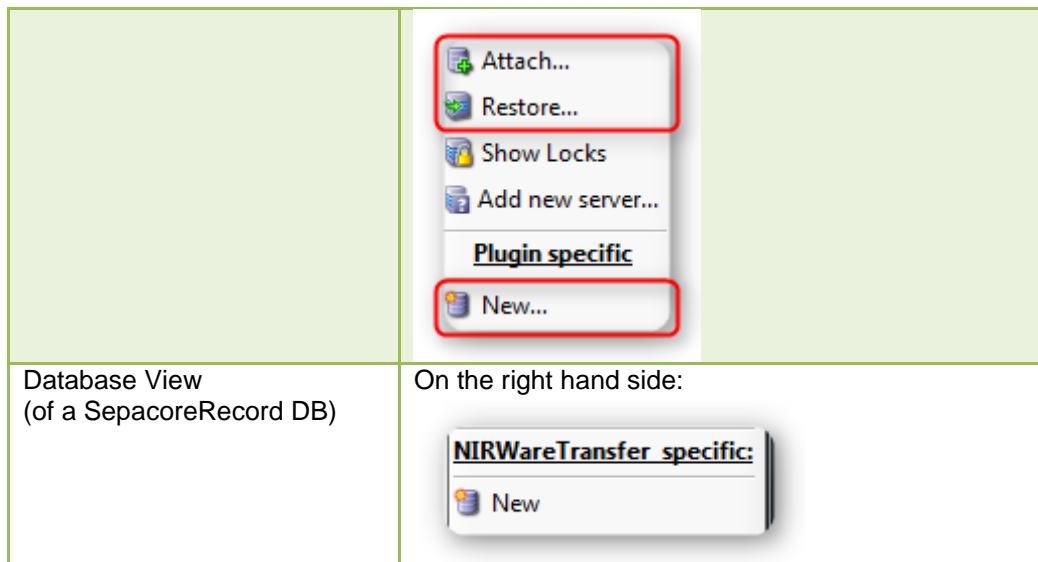
The NIRWare specific Restore acts as the normal one. Additionally there is an advice to execute the Upgrade / Setup function after the successful restore.




## 5.4 Measurement Database

This is a special database used by the Automation interface of the NIRSolution 1.5. You will find the specific functions in:

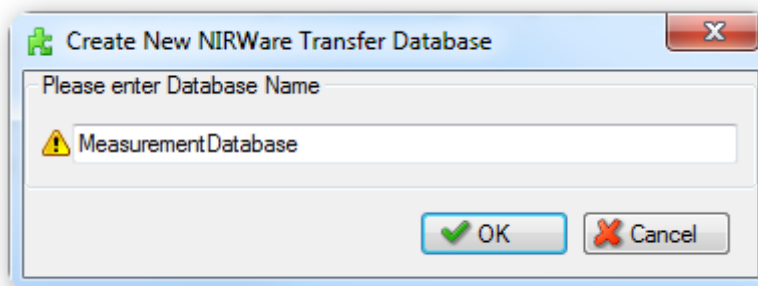
Server View	On the right side menu:
-------------	-------------------------



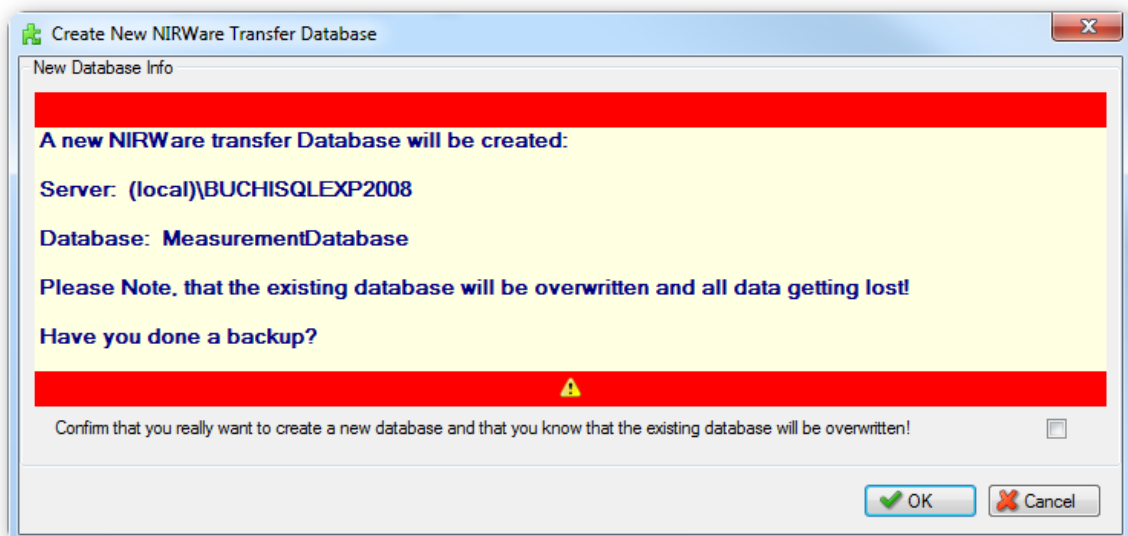
### 5.4.1 New empty database

Close the Automation Interface Client Software before you want to create a new database!  
 Press the New button  **New** in the server view or in the database view of a Measurement database on the right hand side toolbar.

**Attention:** For safety make at first a backup.  
 You can enter the name. If you choose the old name, then the database will be overwritten.



You will get a warning which reminds you that a new empty Measurement Database will be created and will overwrite the old existing database, all data getting lost.



You must confirm this by clicking the check box and then click on OK.

## 6 Requirements

### **Minimum system requirements:**

- Windows 7 Professional / Ultimate / Enterprise (32 & 64 bit) SP1
- Windows 8 (64 bit)
- Windows 10 (64 bit)
- Intel Core i3 or higher and 1.4GHz or faster
- 30 MB of free hard disk space
- 2048 MB RAM
- Display resolution: 1280 x 1024 (1024 x 768 minimum)

## 7 Troubleshooting

### 7.1 Using another folder to store backups

Maybe another folder shall be used to keep the backups.

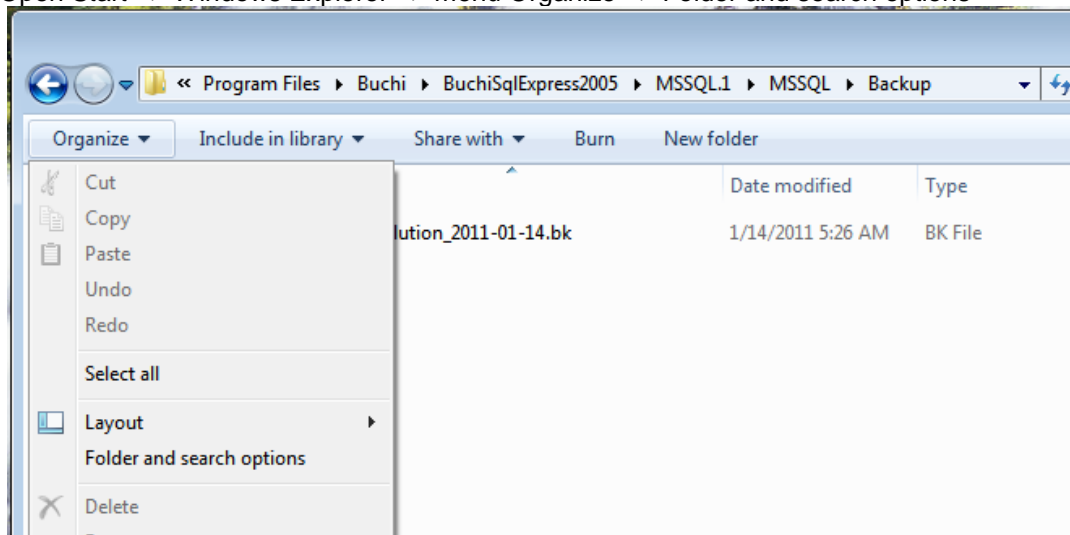
**Recommendation:**

Create this a new folder below root of drive C:\

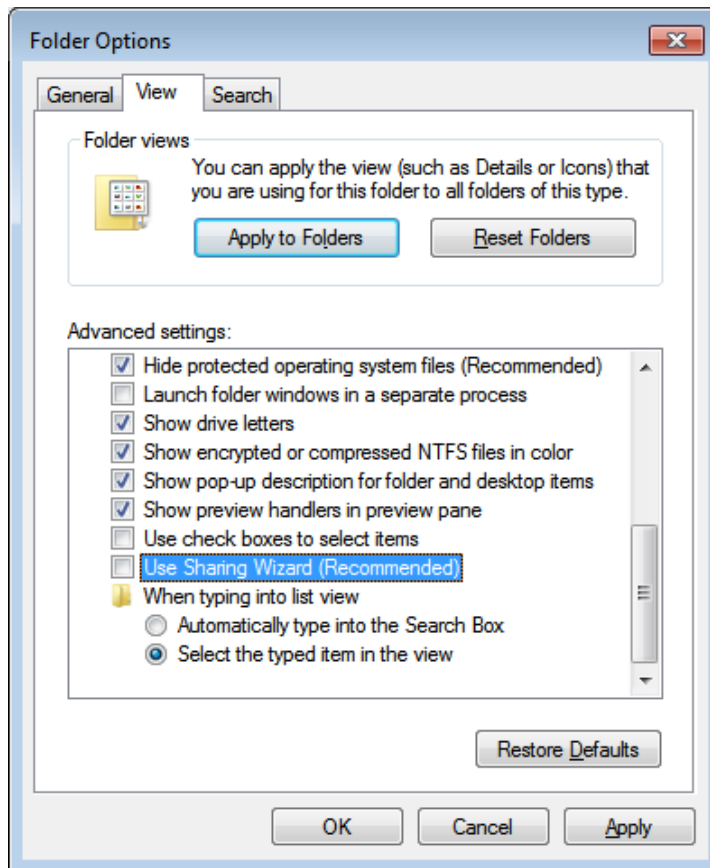
Please refer to below solution to set the needed permissions on this folder:

### Windows 7

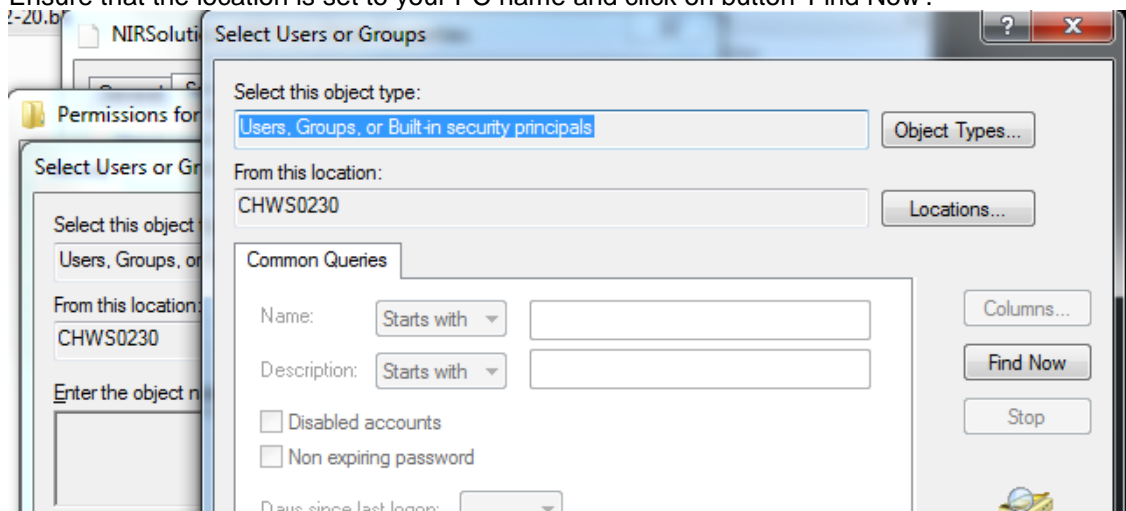
1. Disable 'Sharing Wizard':  
Open Start => Windows Explorer => menu Organize => Folder and search options



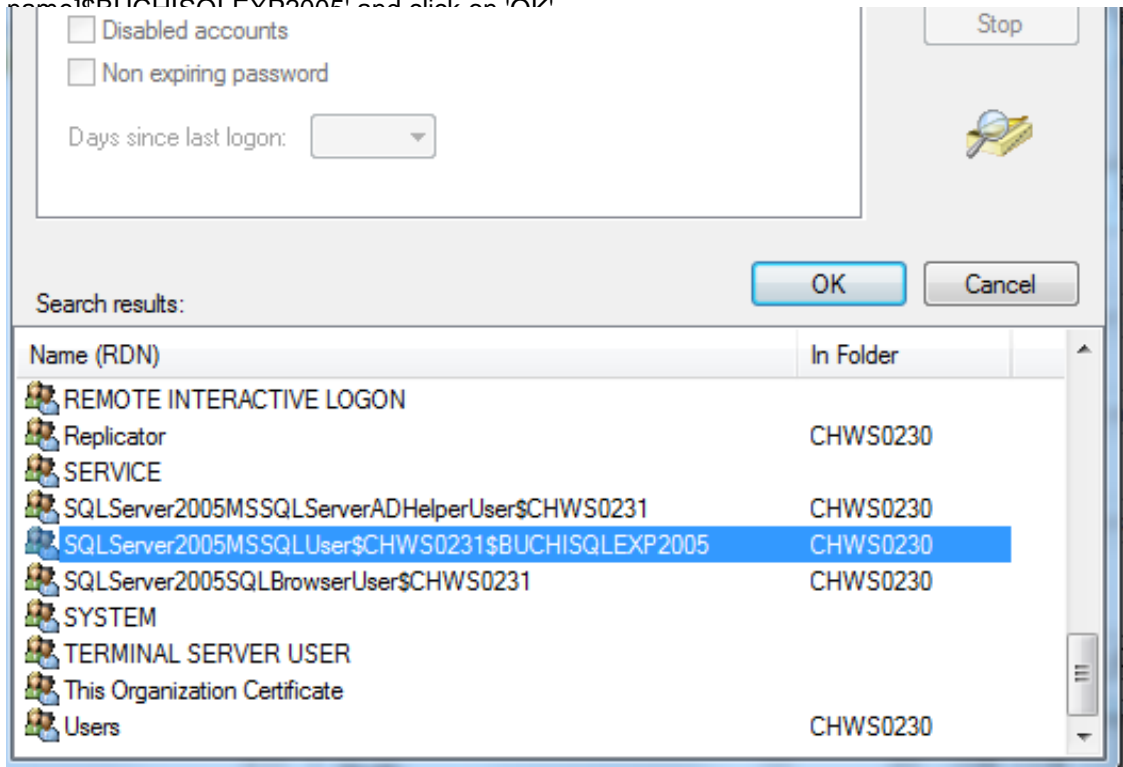
Folder Options => tab 'View' => deactivate checkbox: 'Use Sharing Wizard (Recommended)'



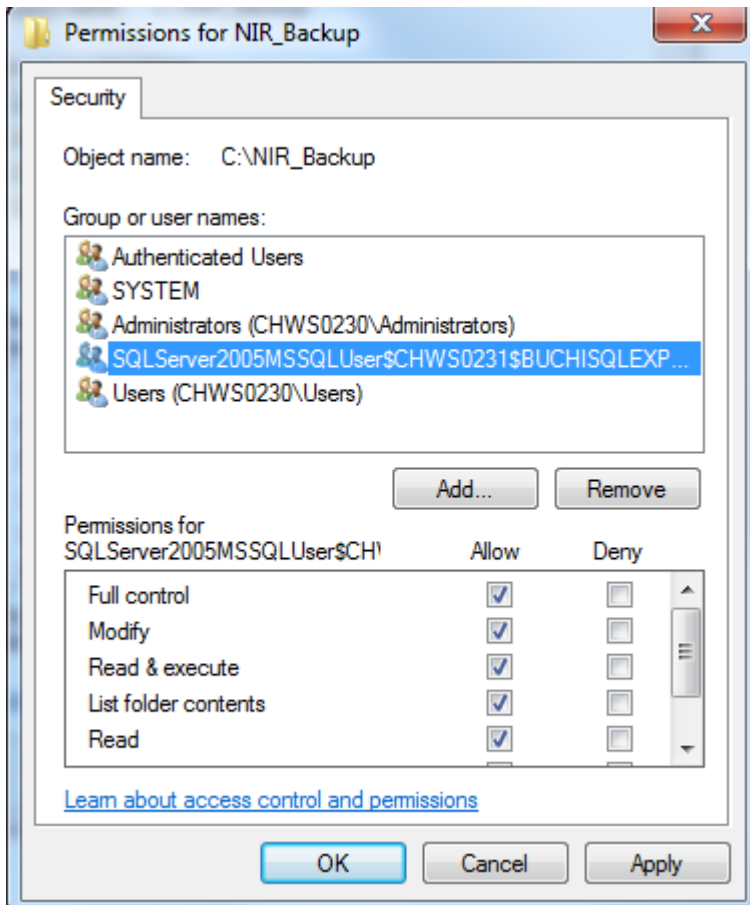
2. Go to the backup folder, e.g. C:\Sepacore\_Backup
3. Right-click on the folder and select 'Properties' => tab 'Security'
4. Click on button 'Edit' then on the next window click on 'Add...' => button 'Advanced...' (bottom left corner)
5. Ensure that the location is set to your PC name and click on button 'Find Now'.



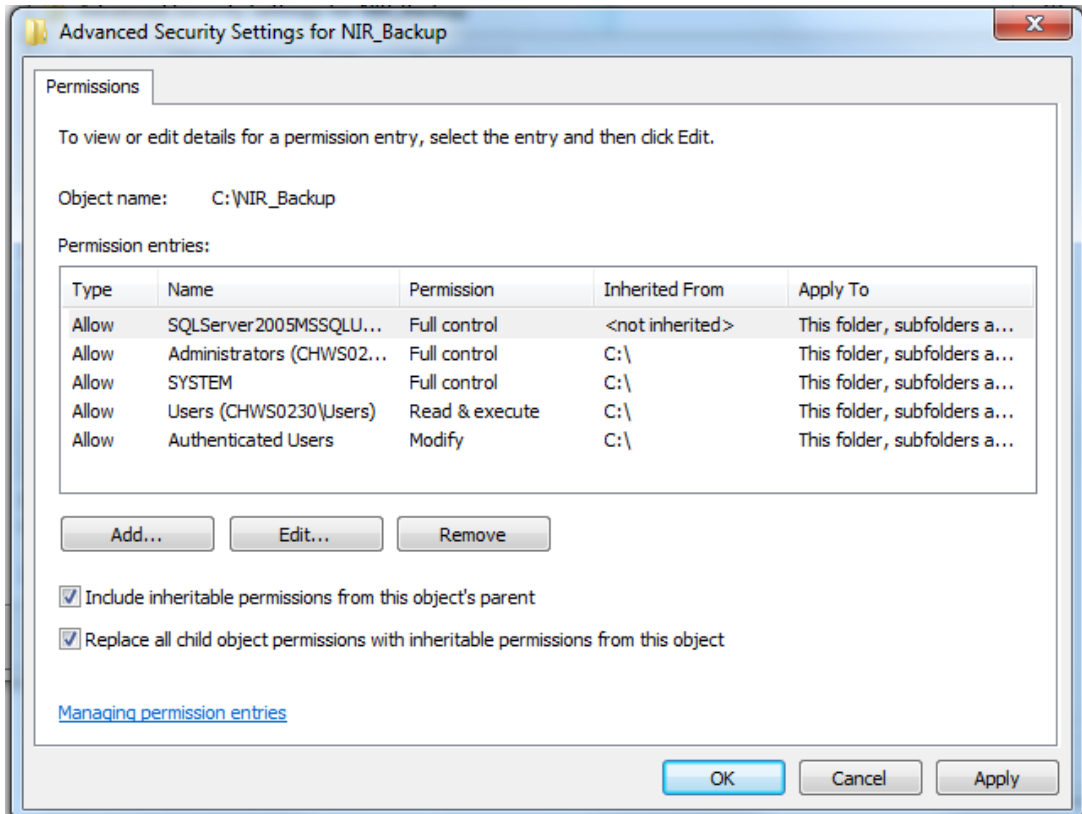
- Select the user group 'SQLServer2005MSSQLUser\$[current or old PC name]\\$BUCHEISQLEXP2005' and click on 'OK'



- Click on 'OK' in window 'Select Users or Groups'
- Click into checkbox 'Full Control' while user SQLServer2005.... is marked



9. If the folder Sepacore\_Backup have been existing already proceed as follow:  
Click on button 'Advanced' => 'Change Permissions' => Activate checkbox 'Replace all child objects permissions with inheritable permissions from this object'

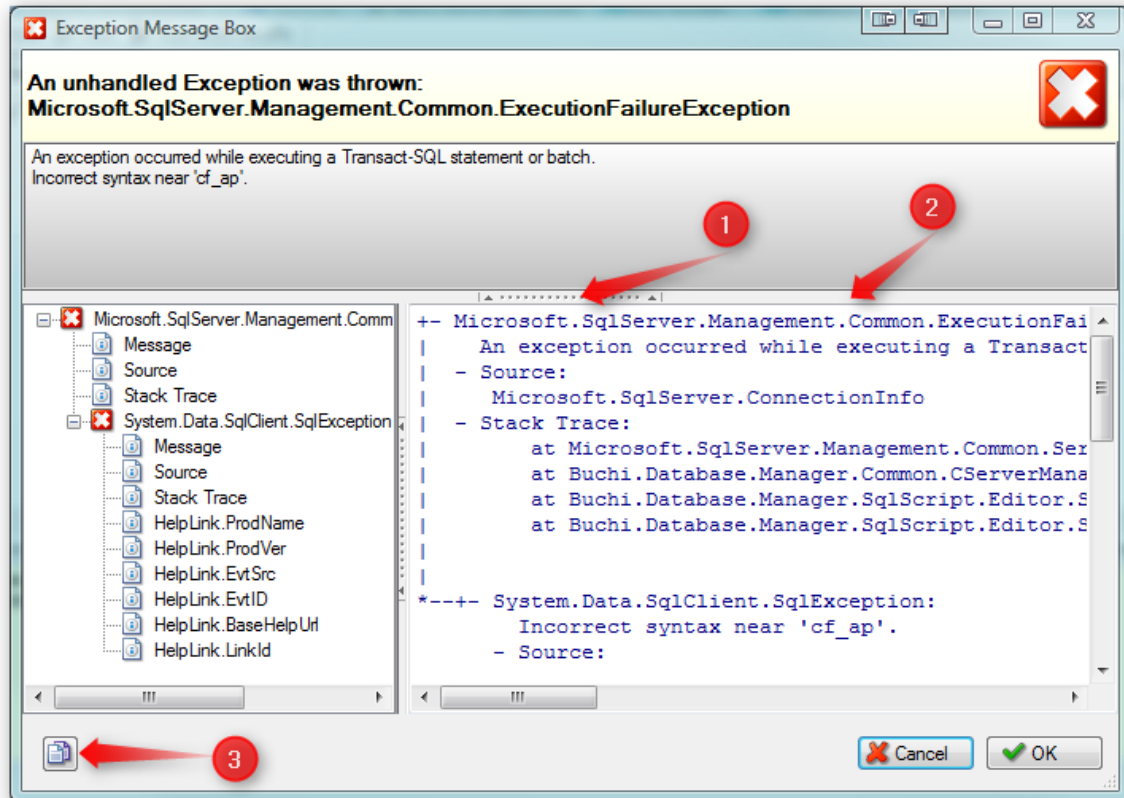


Click on 'OK' confirm to continue, and click again on 'OK' to close properties window of folder 'Sepacore\_Backup'



## 7.2 Exception Dialog

If an unhandled exception is thrown by the application the following Exception Dialog appears. The gray bar displays the main statement of the error. After a few seconds the details of exception are displayed.



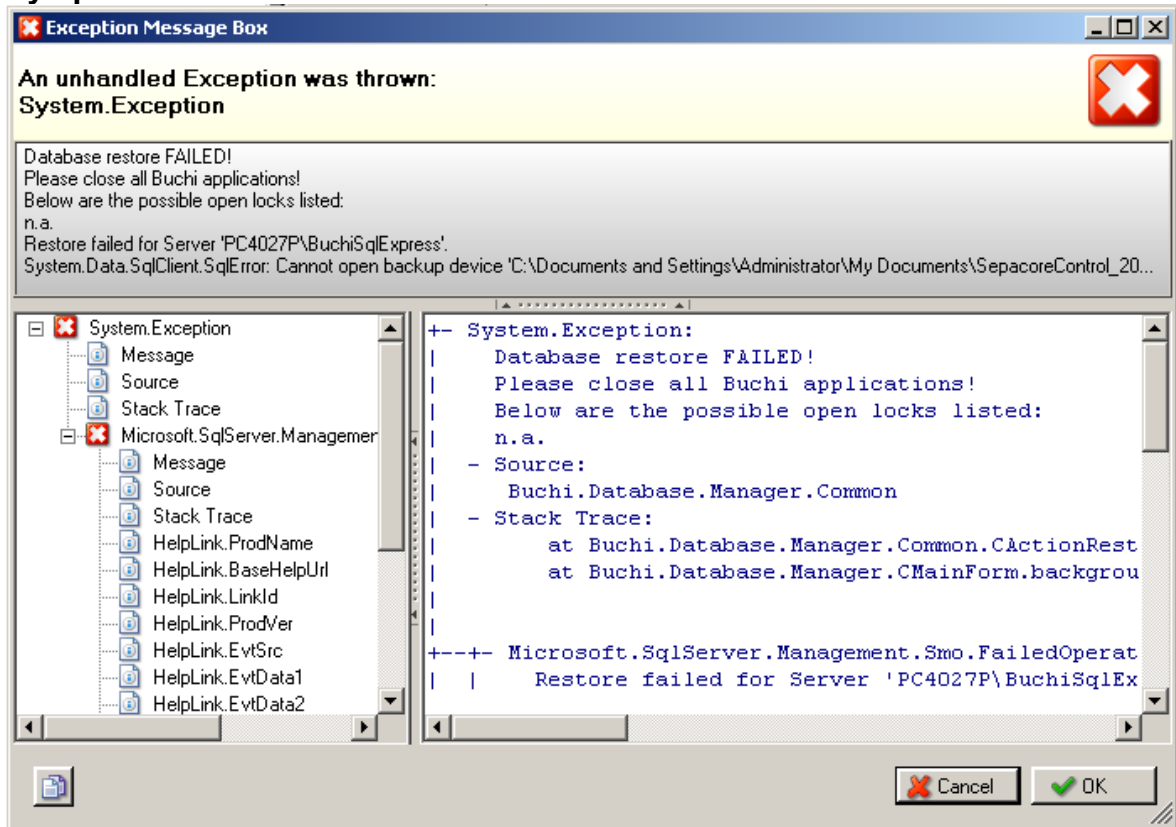
- |   |   |
|---|---|
| 1 | By clicking this part, the additional 'detail error panel' expands or collapses |
| 2 | Dragging this part, you can move the splitter                                   |
| 3 | Copy all info to the Windows clipboard  |

### Important Remark:

In case of required support, please copy all info to the clipboard, save the content into a Notepad or Word document to provide to the software support.

## 7.3 Database restore failed – Access is denied

### Symptom:



### Details from the gray box:

Database restore FAILED!  
Please close all BUCHI applications!  
Below are the possible open locks listed:  
n.a.  
Restore failed for Server 'PC4027P\BuchiSqlExpress'.  
Cannot open backup device 'C:\Documents and Settings\Administrator\My Documents\SepacoreControl\_2011-07-01.bk'. Operating system error 5(Access is denied.).

### Solution:

Per default the SQL server gets the backups saved in this folder:  
'C:\Program Files\Buchi\BuchiSqlExpress2005\MSSQL.1\MSSQL\Backup'. Files that get copied or moved into the folder are subject of following rules defined by Microsoft:

#### Backups done by BUCHI Database Manager.

Backup files obtain automatically the required permissions.

#### Backups copied or moved from another drive.

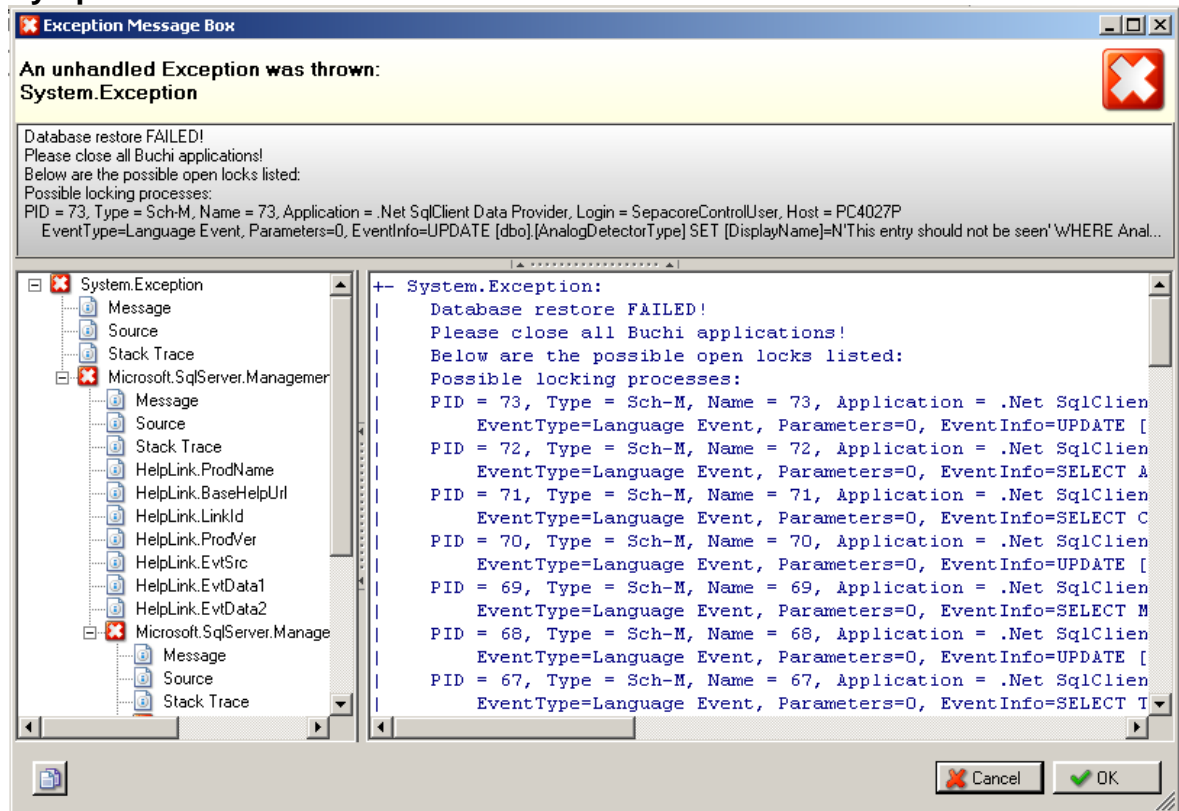
When you copy or move an object to another drive, the object inherits the permissions of its new folder and has so the required permissions are given.

#### Backups done moved within same drive.

1. When an object is moved within the same drive, the object preserves its permissions by default. However, if you want to modify this behavior so that the object inherits the permissions from the parent folder contact the BUCHI software support or your sales representative for further help. Starting with BDM version 1.1 there is also a possibility to use a custom backup folder, where the required permission is set.

## 7.4 Database restore failed – BUCHI software access the DB

### Symptom:



### Details from the gray box:

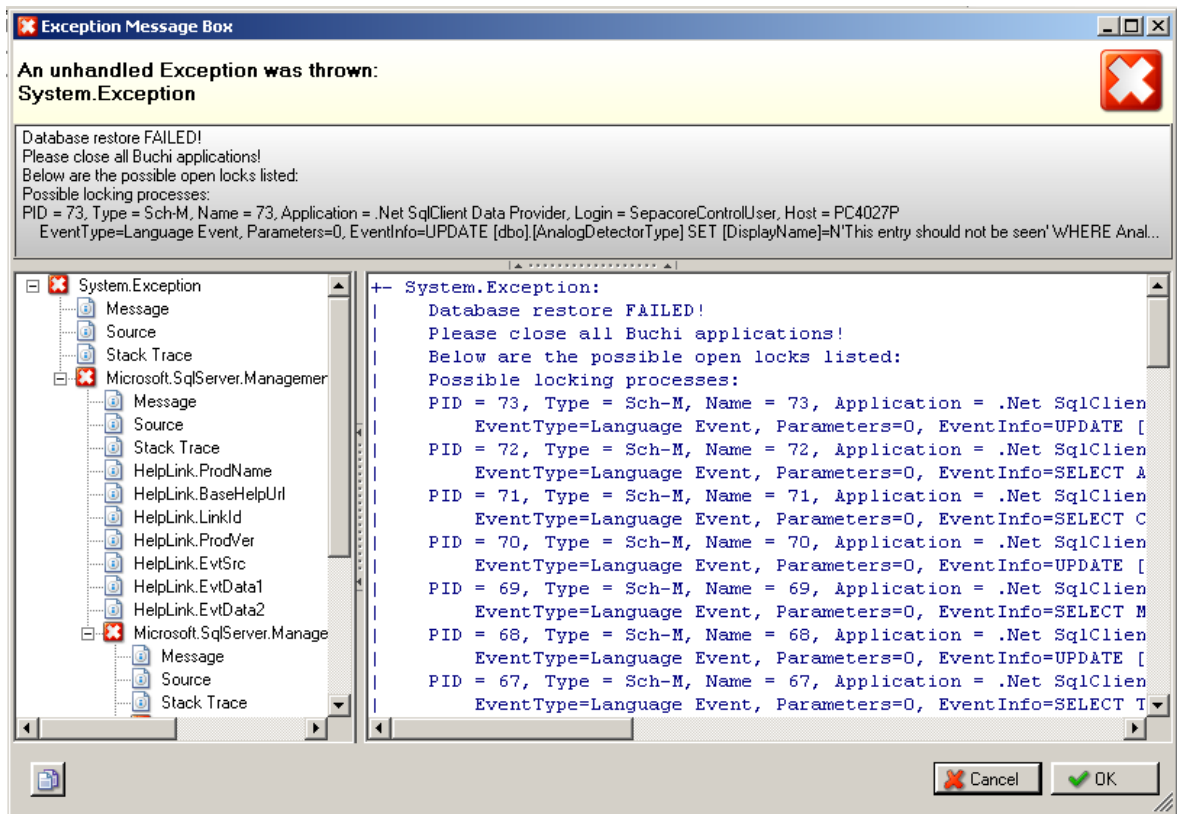
```
Database restore FAILED!  
Please close all Buchi applications!  
Below are the possible open locks listed:  
Possible locking processes:  
PID = 73, Type = Sch-M, Name = 73, Application = .Net SqlClient Data  
Provider, Login = SepacoreControlUser, Host = [local PC name]
```

In the error message can be checked, if running BUCHI software causes the failed restore. If there are locking processes listed (starting with text 'PID = [no.]') and the Host is the local PC mentioned, then this is a BUCHI software running and accessing the DB.

### Solution:

Close all running BUCHI software, e.g. SepacoreControl on local PC.

## 7.5 Database restore failed – BUCHI software runs on another PC



### Details from the gray box:

Database restore FAILED!  
Please close all Buchi applications!  
Below are the possible open locks listed:  
Possible locking processes:  
PID = 73, Type = Sch-M, Name = 73, Application = .Net SqlClient Data  
Provider, Login = SepacoreControlUser, **Host = [remote PC name]**

In the error message can be checked, if running BUCHI software causes the failed restore. If there are locking processes listed (starting with text 'PID = [no.]') and the Host is not the local PC mentioned, this is a BUCHI software running and accessing the DB remotely.

### Solution:

Close all open BUCHI software e.g. SepacoreControl on the remote PC.

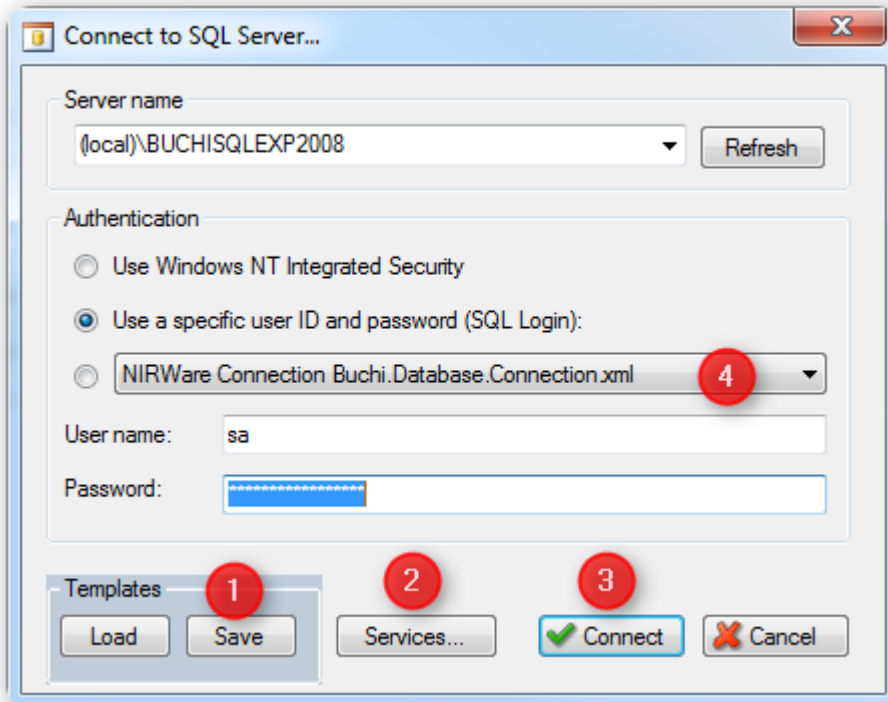
## 7.6 Connect to SQL Server dialog

The button 'Connect' in the main toolbar (refer to chapter 0) opens the connection dialog. It should be set per default to the option 'Use a specific user ID and password (SQL Login)'.

If the BUCHI database manager is not able to connect to your local installed SQL server, activate the last option with the list of default connections for:

- Sepacore Control Default Connection
- don't use: Sepacore Control Default Connection to SQL instance BuchiSqlExp2005
- Sepacore Record Default Connection (SepacoreRecord 1.0 and 1.1)

The connection can be set back to default with this option.



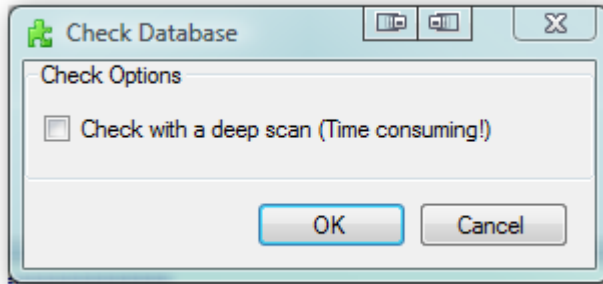
Use 'Refresh' to fill the list with local and network wide SQL servers

1	It is possible to save a defined connection to a xml file and then load it.
2	Shows the SQL Server Services dialog
3	Tries to connect with above settings and continues
4	This entries depends on the Plugins which provides specific connections with predefines users and passwords

## 7.7 Check DB

When the software support asks you to check the integrity of the DB, please proceed as follow:

1. Delete the existing log, by clicking on icon 'New' in the log and info panel (refer to chapter 3.7)
2. Mark the DB to be checked
3. Click on 'Check...' in the right panel
4. Leave the deep scan unchecked and click on 'OK'



5. Copy the log to a Notepad or Word file and provide it to the BUCHI software support.

**Technical Information:**

This Check function uses the SQL Server DBCC CHECKDB command.

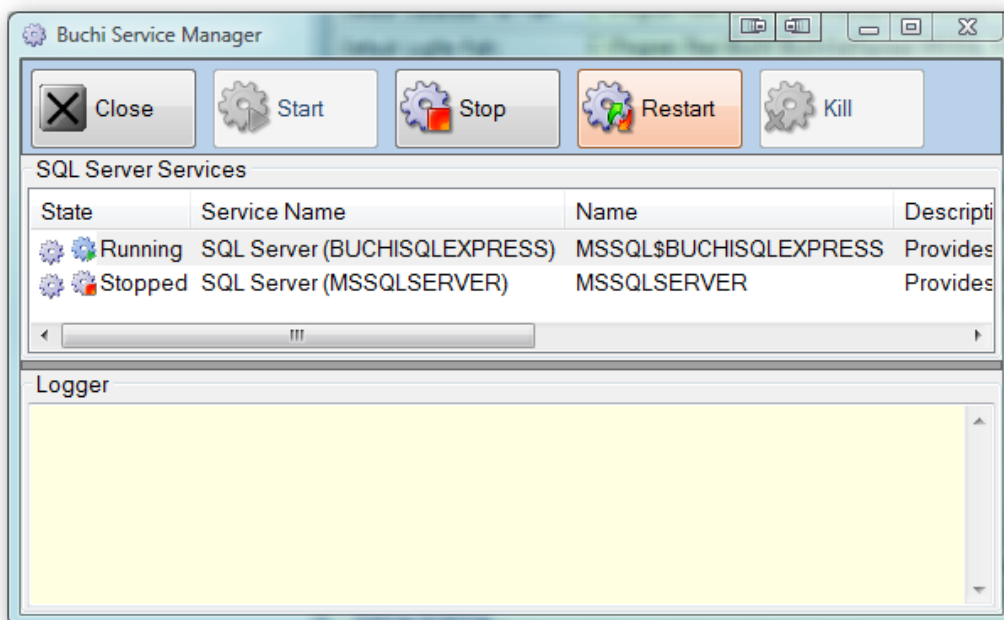
## 7.8 Show software accessing the server or DB

This function lists all software accessing the server or DB and locking so the server or DB.

1. Select in the tree panel the server or DB
2. Click on 'Show Locks' and the accessing software will be displayed in the log and info panel.
3. Copy the content to a Notepad or Word file and provide it to the BUCHI software support.

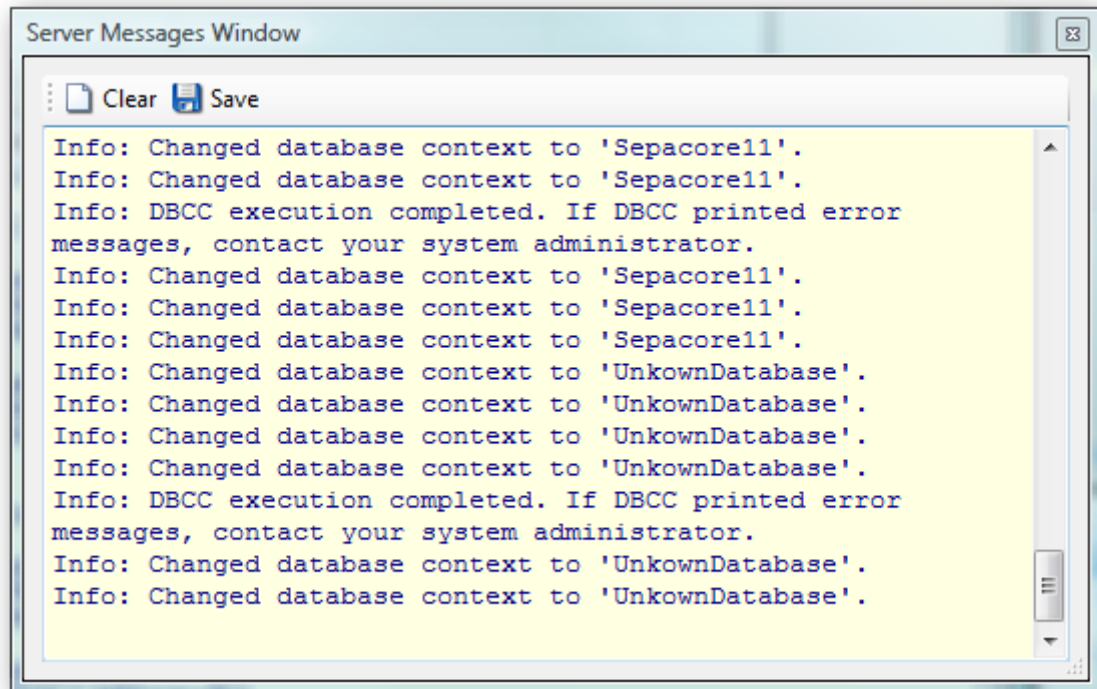
## 7.9 Start and Stop Windows Services

The dialog BUCHI Service Manager can be opened over the main toolbar, icon 'Services'. This dialog allows to 'Start', 'Restart', 'Stop' and probably if not stoppable 'Kill' a SQL Server service.



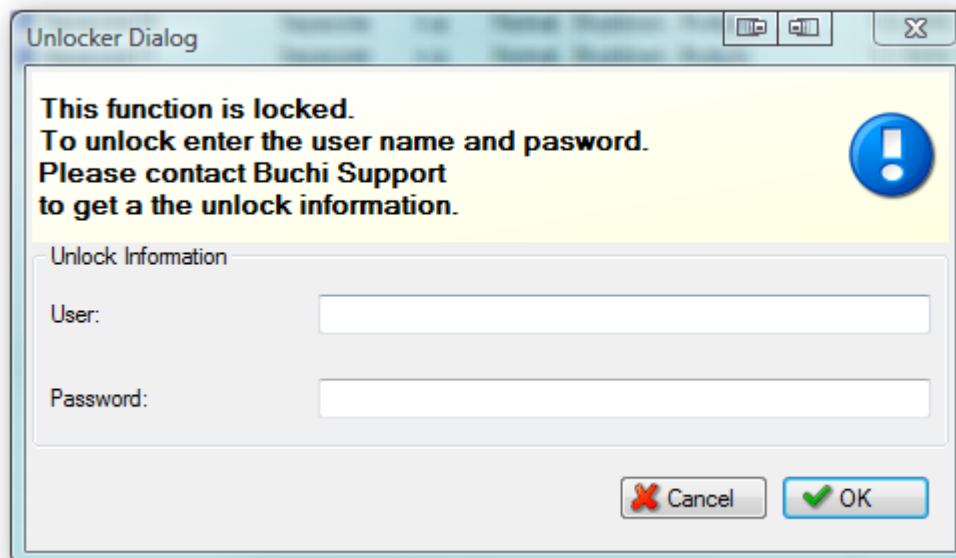
## 7.10 Server Messages Window

SQL server messages are shown in this dialog. It is used for error resolving for software support. The contents can be saved to a text file.



## 7.11 Unlocker Dialog

Running the Script Runner Dialog or protected scripts needs unlocking. This is done by the Unlocker Dialog. You get the user name and password from the software support.



If Running Script is locked or unlocked, check the indicator in the status bar:



Locked

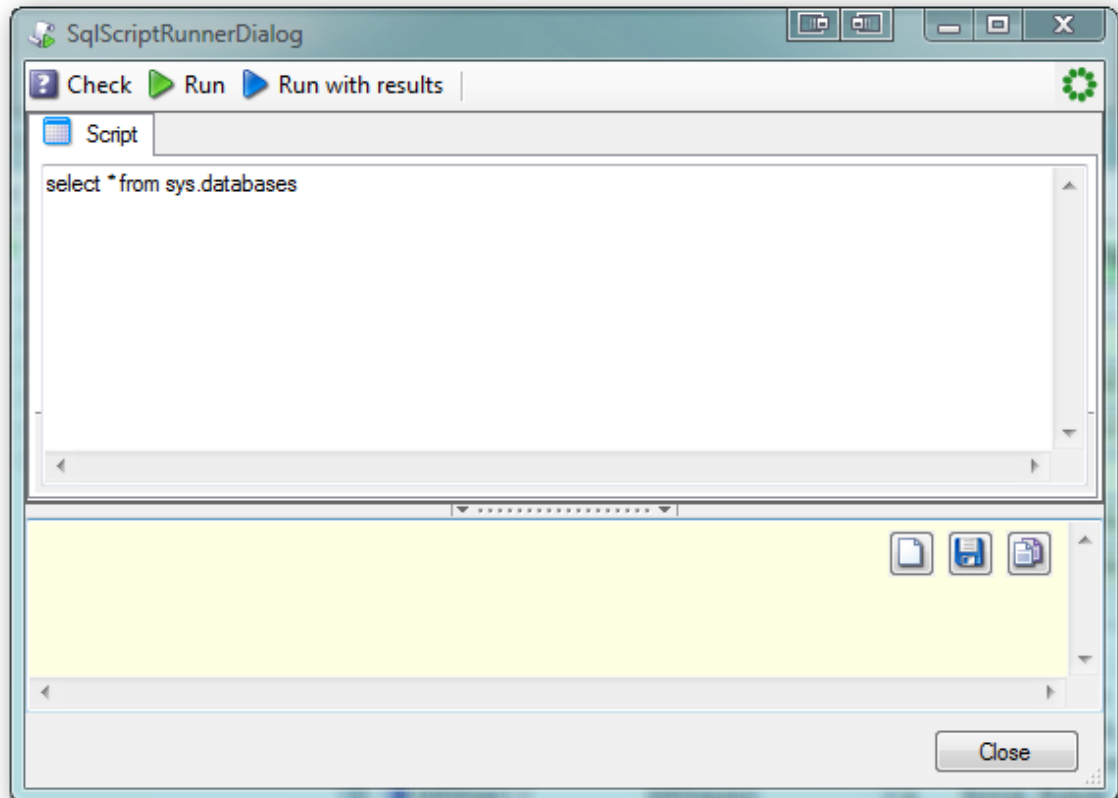


Unlocked

## 7.12 Running Scripts Dialog

Before using this dialog, the 'Unlock Dialog' appears and the user has to enter a user name and password provided by the software support.

After unlocking it is possible to enter SQL statements into the Script textbox.

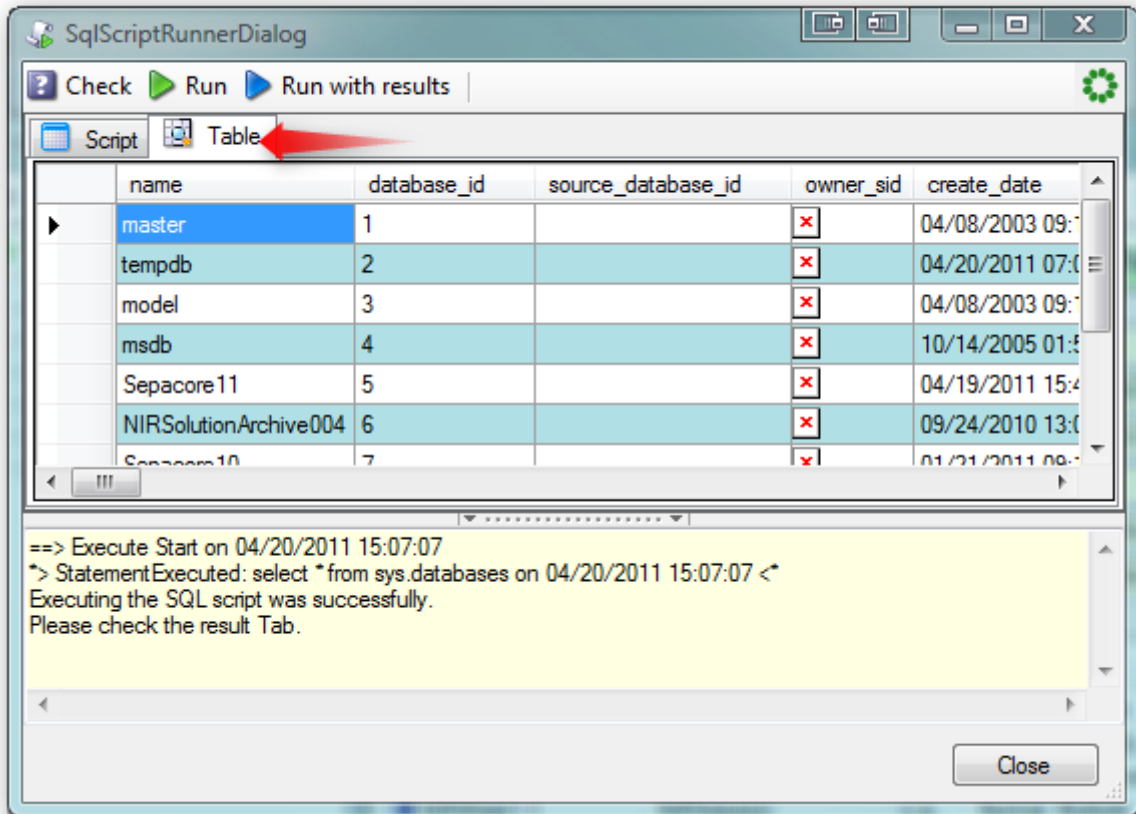


In the logger windows (yellow background) detail information is shown which can be cleared, saved or copied to the clipboard.

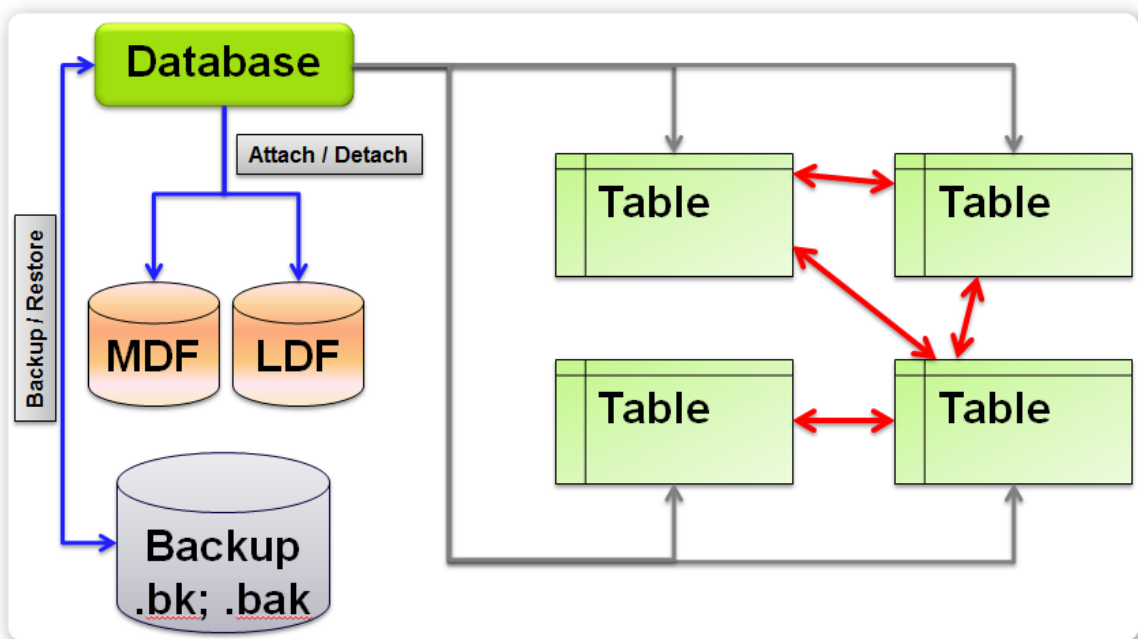
<b>Check</b>	Simulates execution of the script
<b>Run (recommended)</b>	Executes the script, if the script contains any GO, no result data tables are available
<b>Run with results</b>	Forces execution of the script, expecting result data tables and shows them



Below image shows the dialog after executing a script with results. Every result is shown as data table in a separate tab.



## 8 Some basic info about some database functions



## 9 Change History

Version	Date	Author	Remark
1.00	18.04.2011	BOER	Initial Version
1.00	21.07.2011	SCHR	Finalization for customer
1.00	29.08.2011	NUJO	Add chapter 2.3 and 2.4
1.10	05.12.2011	BOER	Version 1.1 and some more details
1.2	25.02.2013	BOER	Version 1.2
1.3	03.06.2013	BOER	Version 1.3

**Table 9-1: Change History**



## BUCHI Affiliates:

### Europe

#### Switzerland/Austria

**BÜCHI Labortechnik AG**  
CH – 9230 Flawil  
T +41 71 394 63 63  
F +41 71 394 65 65  
buchi@buchi.com  
www.buchi.com

#### Benelux

**BÜCHI Labortechnik GmbH**  
Branch Office Benelux  
NL – 3342 GT Hendrik-Ido-Ambacht  
T +31 78 684 94 29  
F +31 78 684 94 30  
benelux@buchi.com  
www.buchi.be

#### France

**BUCHI Sarl**  
FR – 94656 Rungis Cedex  
T +33 1 56 70 62 50  
F +33 1 46 86 00 31  
france@buchi.com  
www.buchi.fr

#### Germany

**BÜCHI Labortechnik GmbH**  
DE – 45127 Essen  
T +800 414 0 414 0 (Toll Free)  
T +49 201 747 49 0  
F +49 201 747 49 20  
deutschland@buchi.com  
www.buechigmbh.de

#### Italy

**BUCHI Italia s.r.l.**  
IT – 20010 Cornaredo (MI)  
T +39 02 824 50 11  
F +39 02 575 12 855  
italia@buchi.com  
www.buchi.it

#### Russia

**BUCHI Russia/CIS**  
Russia 127287 Moscow  
T +7 495 36 36 495  
F +7 495 98 10 520  
russia@buchi.com  
www.buchi.ru

#### United Kingdom

**BUCHI UK Ltd.**  
GB – Oldham OL9 9QL  
T +44 161 633 1000  
F +44 161 633 1007  
uk@buchi.com  
www.buchi.co.uk

#### Germany

**BÜCHI NIR-Online**  
DE – 69190 Walldorf  
T +49 6227 73 26 60  
F +49 6227 73 26 70  
nir-online@buchi.com  
www.nir-online.de

### America

#### Brazil

**BUCHI Brasil**  
BR – Valinhos SP 13271-200  
T +55 19 3849 1201  
F +55 19 3849 2907  
brasil@buchi.com  
www.buchi.com

#### USA/Canada

**BUCHI Corporation**  
US – New Castle, DE 19720  
T +1 877 692 8244 (Toll Free)  
T +1 302 652 3000  
F +1 302 652 8777  
us-sales@buchi.com  
www.mybuchi.com

### Asia

#### China

**BUCHI China**  
CN – 200052 Shanghai  
T +86 21 6280 3366  
F +86 21 5230 8821  
china@buchi.com  
www.buchi.com.cn

#### India

**BUCHI India Private Ltd.**  
IN – Mumbai 400 055  
T +91 22 667 75400  
F +91 22 667 18986  
india@buchi.com  
www.buchi.in

#### Indonesia

**PT. BUCHI Indonesia**  
ID – Tangerang 15321  
T +62 21 537 62 16  
F +62 21 537 62 17  
indonesia@buchi.com  
www.buchi.co.id

#### Japan

**Nihon BUCHI K.K.**  
JP – Tokyo 110-0008  
T +81 3 3821 4777  
F +81 3 3821 4555  
nihon@buchi.com  
www.nihon-buchi.jp

#### Korea

**BUCHI Korea Inc.**  
KR – Seoul 153-782  
T +82 2 6718 7500  
F +82 2 6718 7599  
korea@buchi.com  
www.buchi.kr

#### Malaysia

**BUCHI Malaysia Sdn. Bhd.**  
MY – 47301 Petaling Jaya,  
Selangor  
T +60 3 7832 0310  
F +60 3 7832 0309  
malaysia@buchi.com  
www.buchi.com

#### Singapore

**BUCHI Singapore Pte. Ltd.**  
SG – Singapore 609919  
T +65 6565 1175  
F +65 6566 7047  
singapore@buchi.com  
www.buchi.com

#### Thailand

**BUCHI (Thailand) Ltd.**  
TH – Bangkok 10600  
T +66 2 862 08 51  
F +66 2 862 08 54  
thailand@buchi.com  
www.buchi.co.th

## BUCHI Support Centers:

#### South East Asia

**BUCHI (Thailand) Ltd.**  
TH-Bangkok 10600  
T +66 2 862 08 51  
F +66 2 862 08 54  
bacc@buchi.com  
www.buchi.com

#### Middle East

**BÜCHI Labortechnik AG**  
UAE – Dubai  
T +971 4 313 2860  
F +971 4 313 2861  
middleeast@buchi.com  
www.buchi.com

#### Latin America

**BUCHI Latinoamérica Ltda.**  
BR – Valinhos SP 13271-200  
T +55 19 3849 1201  
F +55 19 3849 2907  
latinoamerica@buchi.com  
www.buchi.com

We are represented by more than 100 distribution partners worldwide.  
Find your local representative at: [www.buchi.com](http://www.buchi.com)